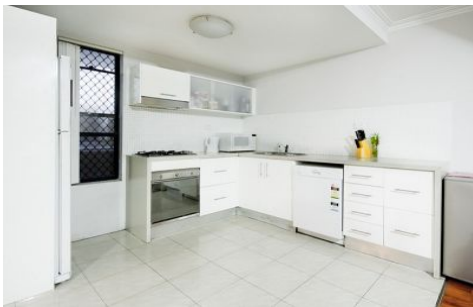


SYDNEY COVE

PROPERTY



17/1-35 Pine Street CHIPPENDALE NSW

3 2 1

Quietly tucked away in arguably one of Chippendales best streets yet so close to all the action, this large three bedroom apartment is positioned at the rear of the complex & offers both ample indoor and outdoor living.

Equally ideal for the owner occupier or investor alike with excellent return of \$725 per week currently (neighbouring apartment just leased for \$780 per week)

145m2 in total the apartment features;
Downstairs;

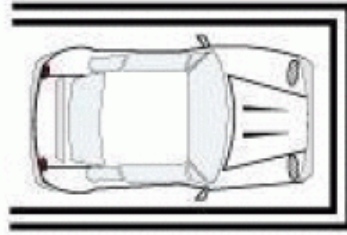
- Spacious open plan living areas with floating floors
- Secure courtyard accessible from living areas
- Modern granite gas kitchen with stainless steel appliances, dishwasher & plenty of storage/cupboard space
- Internal laundry with dryer & guest W.C

View : <https://www.sydneycoveproperty.com/sale/nsw/sydney-city/chippendale/residential/unit/6214148>

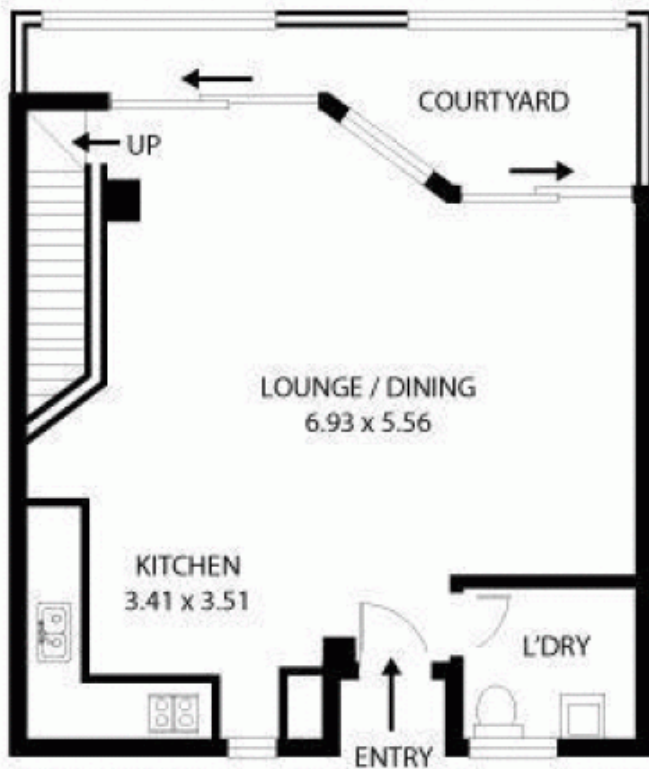


Bryn Fowler
02 8259 3333

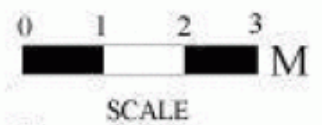
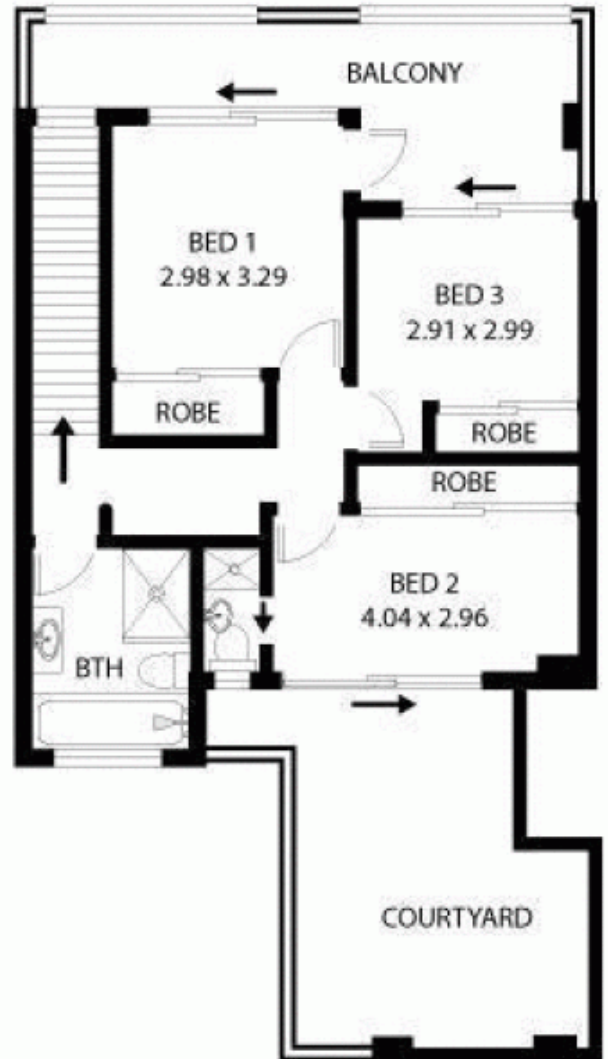
SINGLE
SECURE
CAR SPACE



ENTRY LEVEL



UPPER LEVEL



17/1-35 Pine St Chippendale

All measurements are approximate only. Plan is provided as an indication of layout

