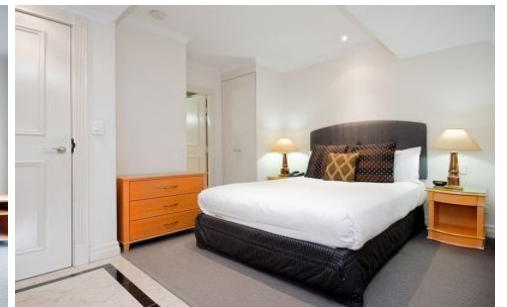
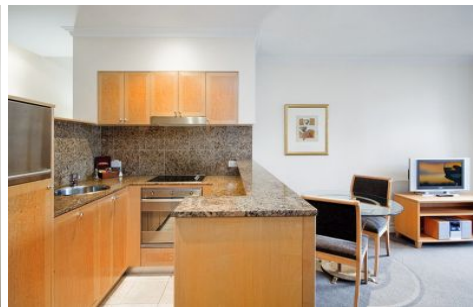


# SYDNEY COVE

PROPERTY



## 2 Bond Street SYDNEY NSW

1 🏠 1 🛏

Investors will love the excellent returns, low outgoings and quality of this low maintenance style investment opportunity.

**View :** <https://www.sydneycoveproperty.com/sale/nsw/sydney-city/sydney/residential/apartment/6214160>

Currently professionally managed by The Mantra, this immaculate studio apartment returns \$25,829.28 per annum currently. Strata levy is only \$580 per quarter.

Ideal for investors seeking a superbly located investment property with a guaranteed income stream with no vacancy and no management fees to pay.

This great apartment offers great flexibility to owners:

- Leasing under the hotel scheme
- Leasing via reputable agency
- Or move in yourself



**Bryn Fowler**  
**02 8259 3333**