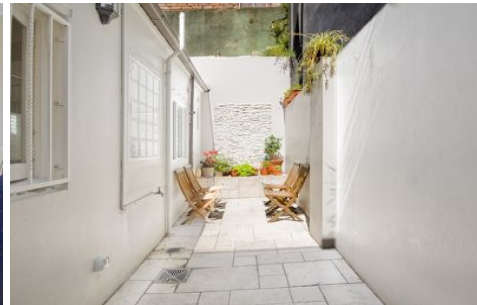


SYDNEY COVE

PROPERTY



178 McElhone Street POTTS POINT NSW

2 1

A fantastic opportunity for the owner occupier or savvy investor awaits with the offering of this inner city two bedroom terrace to the marketplace, located in a quiet street, yet so close to all the action.

Ideally nestled within the heart of Potts Point, Woolloomooloo, and Darlinghurst at the William Street end of McElhone Street. An easy walk to the CBD, Hyde Park and fabulous Potts Point eateries and nightlife.

The property boasts City skyline views, a large sunny rear courtyard great for relaxing and entertaining and well maintained light filled interiors throughout. Other features include;

- *Two good sized bedrooms
- *Separate living and dining areas

View : <https://www.sydneycoveproperty.com/sale/nsw/eastern-suburbs/potts-point/residential/terrace/6214185>



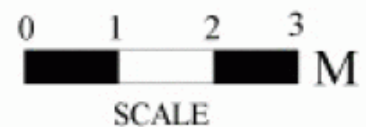
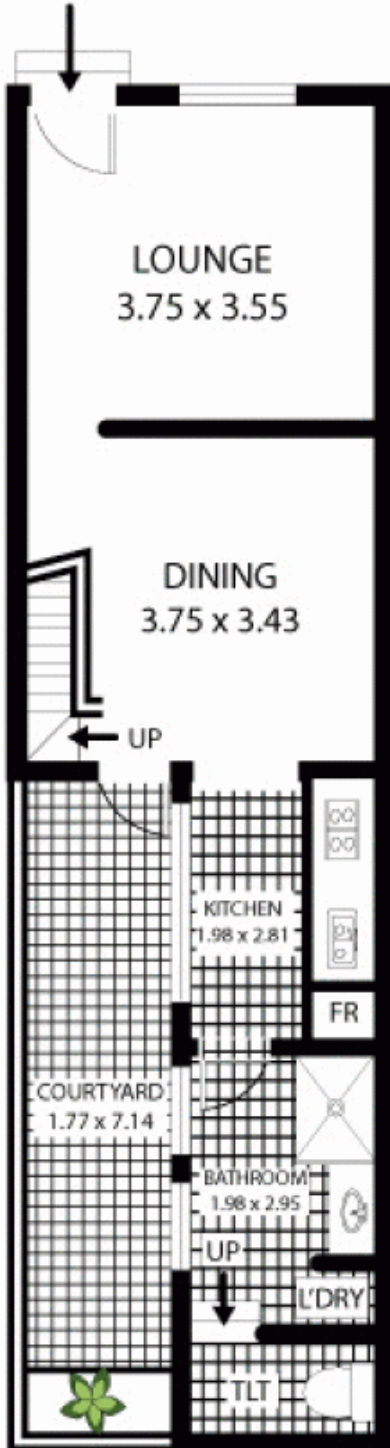
Bryn Fowler
02 8259 3333

ENTRY LEVEL

UPPER LEVEL

ATIC STORAGE LEVEL

ENTRY



178 McElhone St Woolloomooloo

sydney cove
PROPERTY



All measurements are approximate only. Plan is provided as an indication of layout