

SYDNEY COVE

PROPERTY



26/1 Macquarie Street SYDNEY NSW

1 2 1

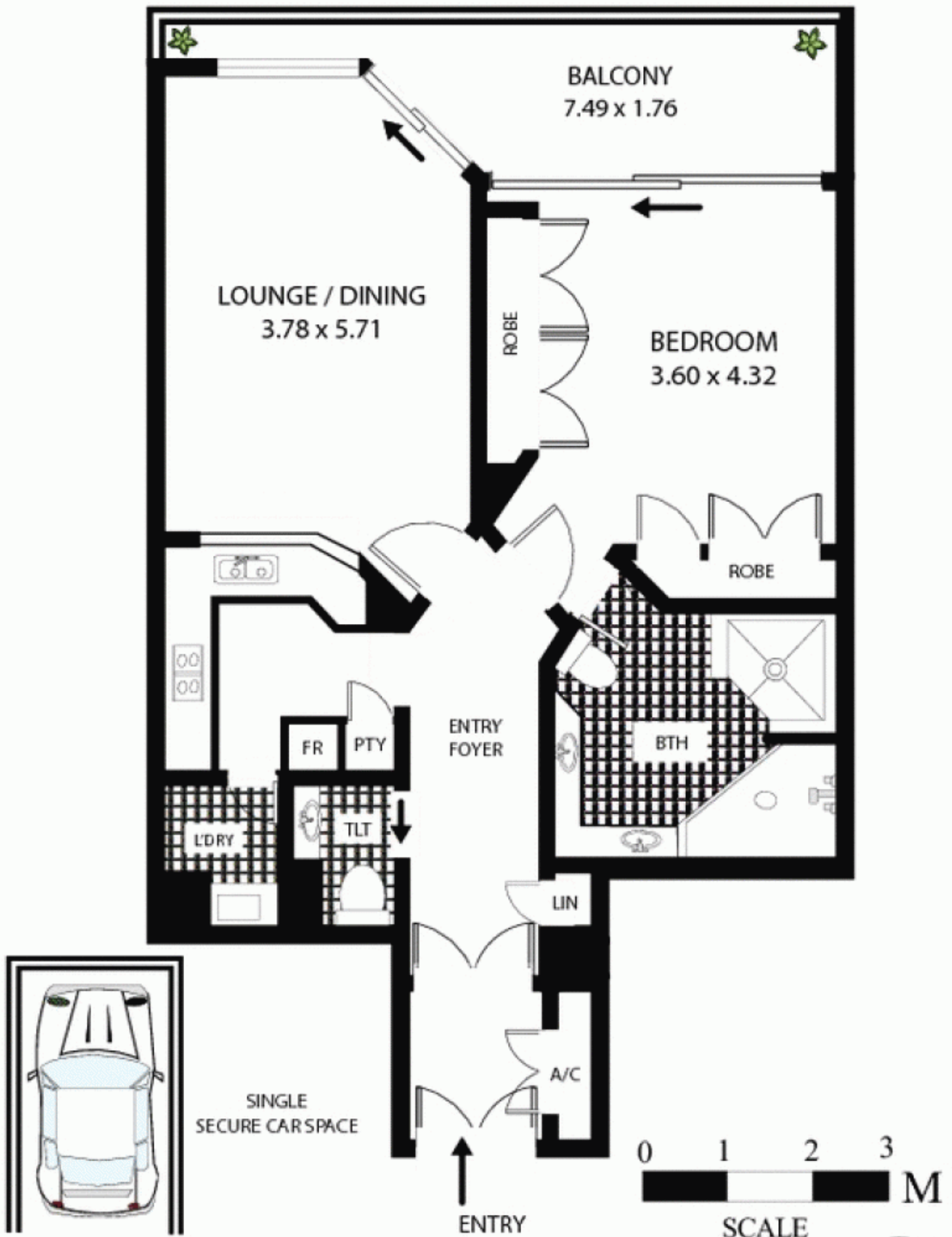
With a perfect position on level 2 of Bennelong 1 and an intimate, picturesque harbourside view this apartment offers both a lifestyle of luxury and convenience as well as a sound long-term investment choice with assured capital growth to the discerning buyer.

- Light filled, superbly appointed and well proportioned throughout
- Flawless world class views of the Harbour Bridge, Circular Quay
- Spacious living areas with floor to ceiling glass
- Stylish gas kitchen with marble benchtops & Gaggenau appliances
- Marble bathroom with spa and twin basins, powder room
- Large bedroom with built-ins and access to balcony
- Secure undercover parking space
- A residence of limitless appeal and elegance

View : <https://www.sydneycoveproperty.com/sale/nsw/sydney-city/sydney/residential/apartment/6214245>



Bryn Fowler
02 8259 3333



26/1 Macquarie St Sydney

All measurements are approximate only. Plan is provided as an indication of layout.

sydney cove
REAL ESTATE

