




SYDNEY COVE

PROPERTY



68 Market Street SYDNEY NSW

2  2  1 

Unfurnished two bedroom apartment located high within the prestigious international Swissotel. Enjoy a 5 star lifestyle surrounded by the best amenities including the State Theatre, Queen Victoria building, Pitt Street Mall, Hyde Park and more. These apartments are separate and exclusive from the hotel; however, many hotel facilities are available to residents.

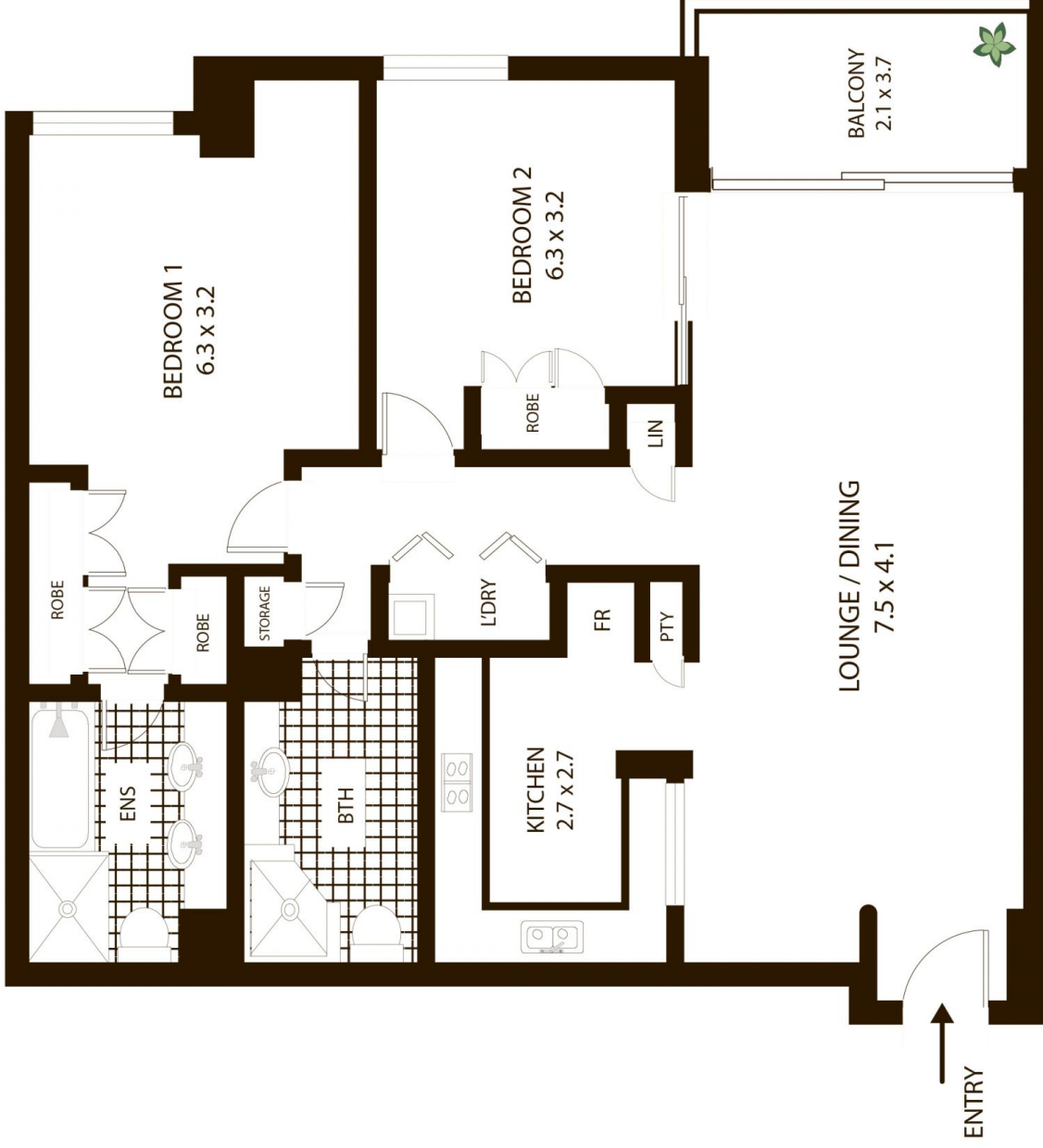
View : <https://www.sydneycoveproperty.com/lease/nsw/sydney-city/sydney/residential/apartment/6215209>

Key points:

- * Queen sized bedrooms, built in robes
- * Stone kitchen with quality appliances
- * Elegant marble bathrooms + laundry
- * Balcony with city views, Ducted A/C
- * Pool & spa, plus room service available
- * Concierge, valet parking, city views!



Grant Ashby
02 9241 1288



SCALE

3104/68 Market St Sydney

All measurements are approximate only. Plan is provided as an indication of layout