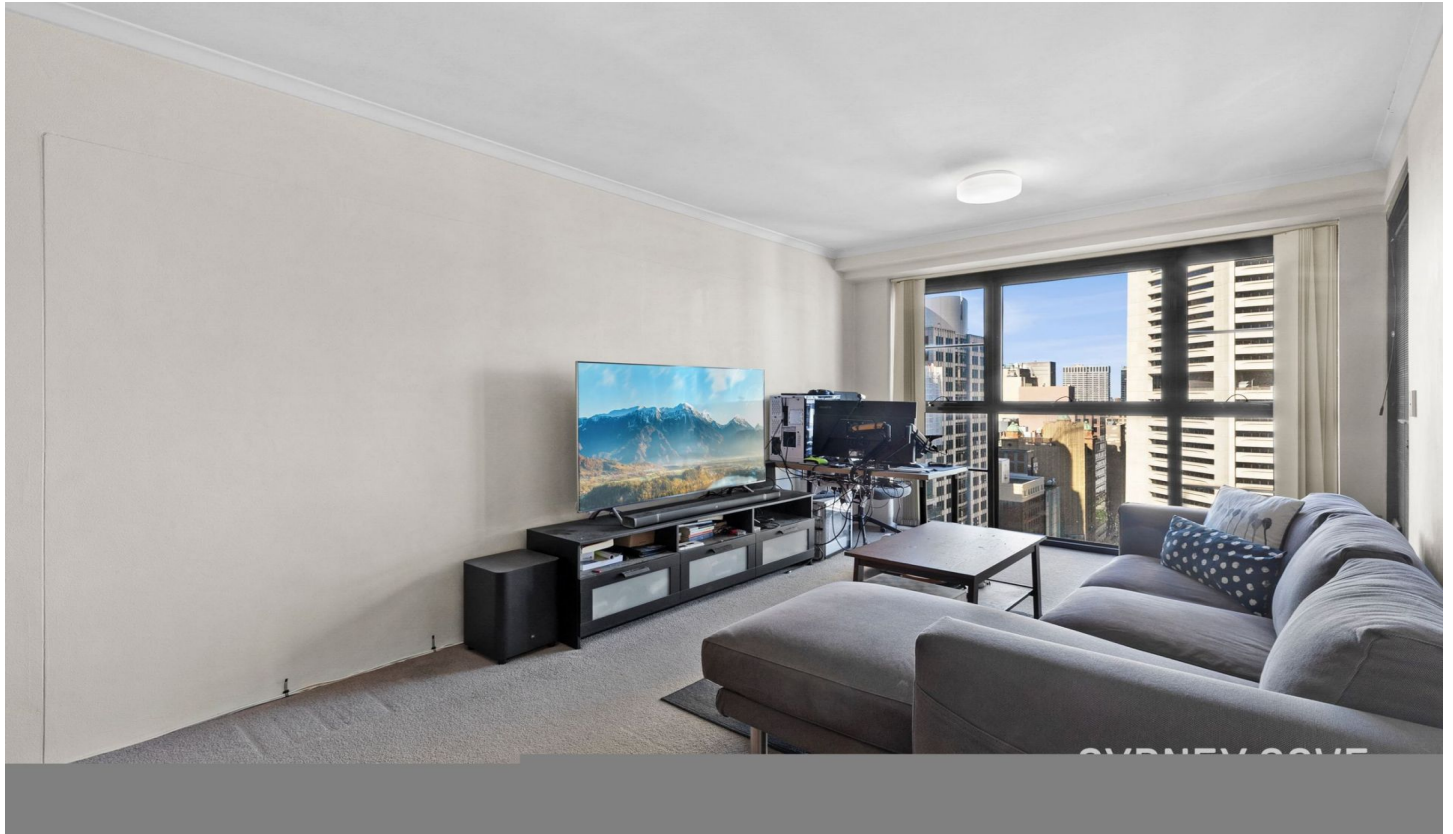


SYDNEY COVE

PROPERTY



1 Hosking Place SYDNEY NSW

Centrally located in the "Aston" apartment building, this corner apartment is set on a high floor with amazing city views. With an excellent open plan living area & private balcony offering modern living, residents are only a very short walk to Martin place which boasts bars, restaurants, cafe's and transport.

Key points:

- * Large open & spacious floor plan
- * Stone kitchen and gas appliances
- * Entertainers balcony off lounge room
- * Double bedroom with built in robes
- * Tiled bathroom, Internal Laundry, AC
- * Onsite concierge, outdoor pool

1 1

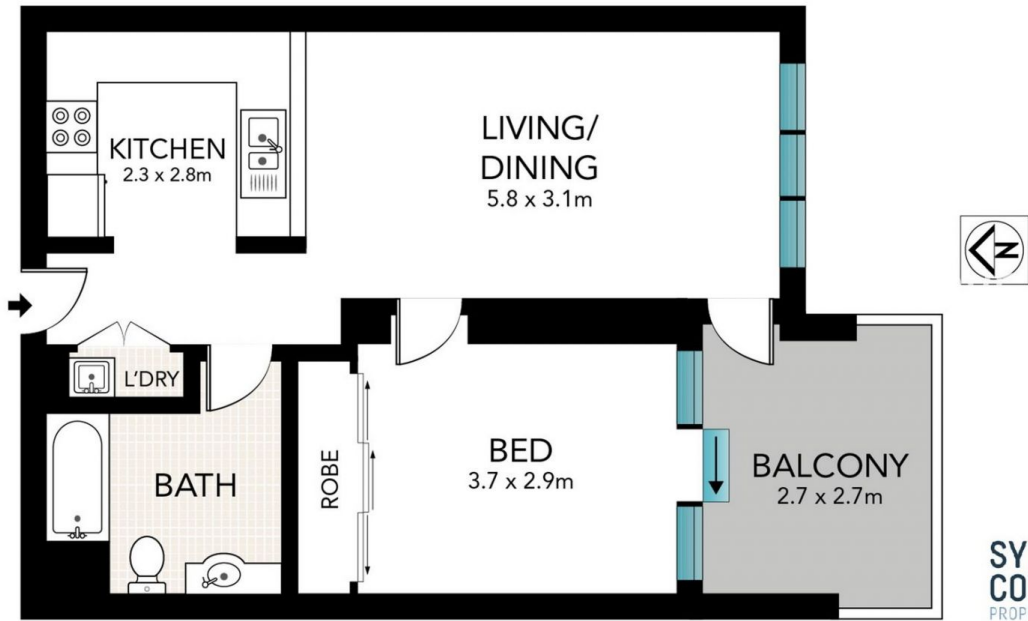
View : <https://www.sydneycoveproperty.com/lease/nsw/sydney-city/sydney/residential/apartment/6215598>



Cherie Xue
02 9241 1288



Kayla Caldwell
02 9241 1288



**SYDNEY
COVE**
PROPERTY