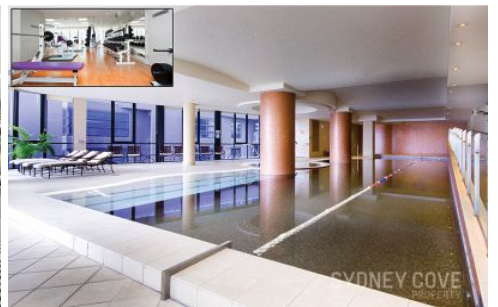


SYDNEY COVE

PROPERTY



183 Kent Street SYDNEY NSW

2  2  1 

Impressive west facing fully furnished apartment located in the Prestigious 'Stamford on Kent'. Enjoy the incredible views of the western Harbour as well as the fantastic lifestyle and convenience being so close to the CBD, the Rocks and the areas many fine eateries and shops.

Building Size : 119 sqm
View : <https://www.sydneycoveproperty.com/lease/nsw/sydney-city/sydney/residential/apartment/6215739>

Features include:

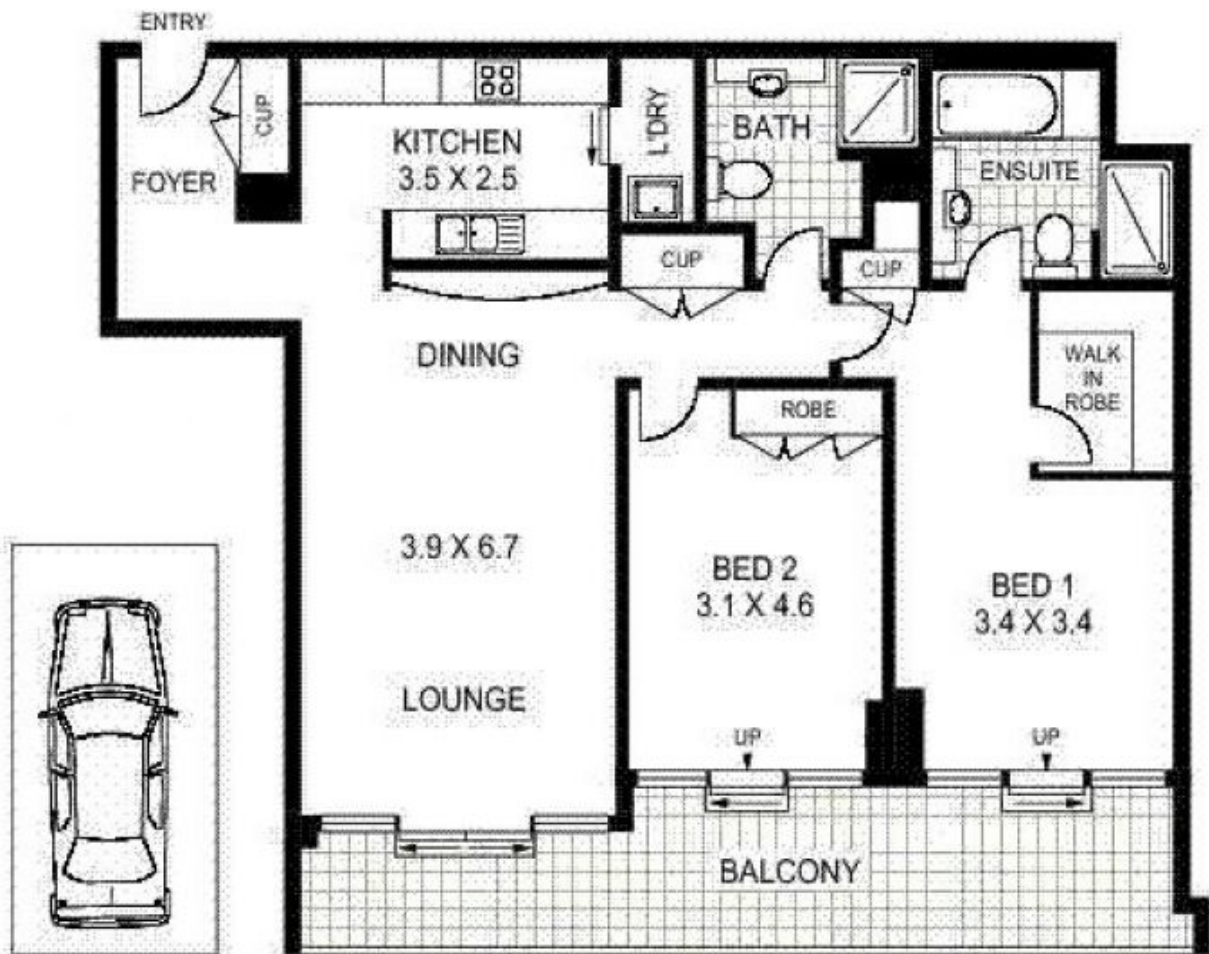
- Western aspect with fantastic Harbour views
- Spacious interior with open plan living/dining
- Entertainer's balcony with an impressive aspect
- Luxury marble bathrooms, ensuite with bath tub
- Double bedrooms with ample built in wardrobes
- Gourmet kitchen, quality European appliances
- Security car space, internal laundry, ducted A/C
- 24h concierge, health club with pool, gym & spa



Kayla Caldwell
02 9241 1288



Cherie Xue
02 9241 1288



**NOTE : ONE SINGLE CAR SPACE
ON SECURITY PARKING**



183 KENT STREET

SYDNEY

Floor Plan Disclaimer: Mind the Gap (mtg) floor plans / site plans are intended as a guide only. No representations or warranties of any nature whatsoever are given or intended and any person using this information should always rely on their own enquiries. mtg property marketing services - 1300 133 145 - photography, floor plans, virtual tours, video tours, copywriting, project marketing - www.mindthegap.com.au