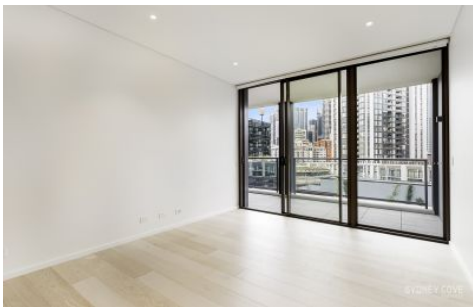


# SYDNEY COVE

PROPERTY



## 1 Steam Mill Lane SYDNEY NSW

1  1  1 

This beautifully presented one bedroom apartment is the perfect residence. The fully equipped kitchen has ample storage and opens to a living area with timber floors and leads to generous size balcony. The apartment includes secure parking for one car & a secure storage space. The close proximity to restaurants, entertainment, shopping & cafes makes this luxury apartment the pinnacle of city living.

**View** : <https://www.sydneycoveproperty.com/lease/nsw/sydney-city/sydney/residential/apartment/6215895>

### Key Points:

- Near new development, timber flooring throughout
- Beautiful kitchen with ample storage space & gas cooking
- Secure, ultra-convenient parking + storage space
- Located close to light rail, bus & train stations
- Walking distance to Sydney CBD cafes & bars



**Cherie Xue**  
02 9241 1288



**Kayla Caldwell**  
02 9241 1288