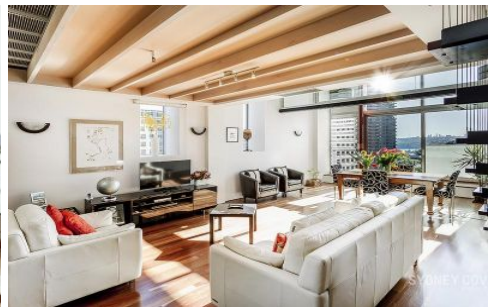
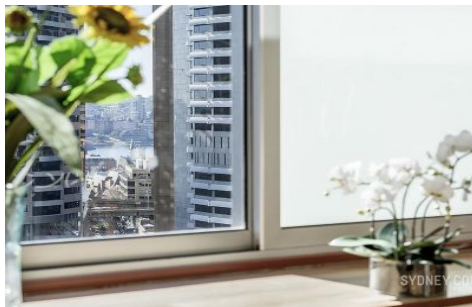


SYDNEY COVE

PROPERTY



2 York Street SYDNEY NSW

2 🛏 2 🚿 1 🚗

Wonderful north facing, two level apartment in the unique Portico building. Created from the old Scotts Church this landmark development offers a combination of historical and modern touches whilst being located in a prime CBD position with shops, cafes, transport, the Rocks and Circular Quay all within a close proximity.

Building Size : 118 sqm
View : <https://www.sydneycoveproperty.com/lease/nsw/sydney-city/sydney/residential/apartment/6215907>

Features include:

- Spacious, north facing apartment with views
- Double vaulted ceilings & floor to ceiling glass
- Large modern kitchen area with island bench
- Two double bedrooms, loft style apartment
- Chic limestone bathroom, master with ensuite
- Private winter garden, Air-cond & internal laundry
- Polished floor, own storage room & secure access
- 24 hour concierge, lift access, single car space



Kayla Caldwell
02 9241 1288



Cherie Xue
02 9241 1288