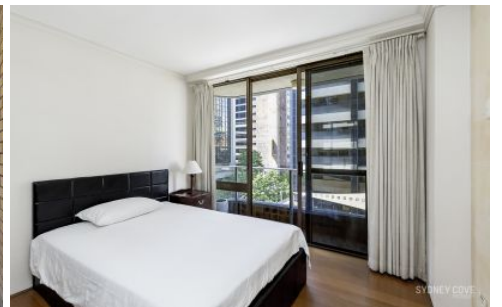


# SYDNEY COVE

PROPERTY



## 25 Market Street SYDNEY NSW

Located in one of the central CBD's most popular buildings is this large two bedroom apartment in 'The Berkeley'. With timber flooring & a spacious design, this apartment offers a rare opportunity to live in the Heart of Sydney. You will be impressed by the close proximity to Darling Harbour, Barangaroo, the QVB and Town Hall station.

Key points:

- \* Fully furnished two bedroom apartment
- \* North facing living area with large balcony
- \* Double bedrooms with built-in wardrobes
- \* Upgraded bathroom & master ensuite
- \* Spacious kitchen with quality appliances
- \* Secure building, onsite manager & lift access

2 🛏 2 🚿

**View** : <https://www.sydneycoveproperty.com/lease/nsw/sydney-city/sydney/residential/apartment/6215911>



**Kayla Caldwell**  
02 9241 1288



**Cherie Xue**  
02 9241 1288