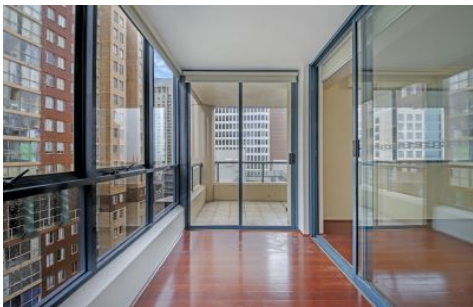


# SYDNEY COVE

PROPERTY



**303 Castlereagh Street SYDNEY NSW**

2  2  1 

Set on the 26th floor of the Regis Towers is this beautiful two bedroom, two bathroom apartment with a secure lock-up garage. Featuring panoramic views of the city and Park plus a large entertaining balcony, this apartment captures the best of city living. Situated in the most buzzing part of Sydney and close to Hyde Park, Darling Harbour, China Town, Haymarket and World square. In less than a minute walk, you will find the most amazing food, shops and cafes any time of the day!

**View** : <https://www.sydneycoveproperty.com/lease/nsw/sydney-city/sydney/residential/apartment/6216091>

**Key Points:**

- Spacious living space, granite kitchen with gas cooking, plenty of storage space, air conditioning
- Natural light floods the apartment with floor to ceiling doors leading to the sun room and balcony area
- Two spacious bedrooms with BIR, master with ensuite,



**Cherie Xue**  
02 9241 1288



**Kayla Caldwell**  
02 9241 1288