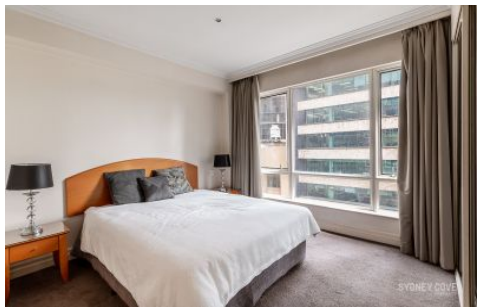


# SYDNEY COVE

PROPERTY



## 2 Bond SYDNEY NSW

1 1

Positioned in the centre of the atmospheric CBD, this spacious apartment is part of the popular 'Mantra' building on George St. A hive of convenience, this central pad is surrounded by all the excitement of the busy city, with buses, trains, restaurants & bars all within moments of your door.

**View :** <https://www.sydneycoveproperty.com/lease/nsw/sydney-city/sydney/residential/apartment/6216109>

### Key Points

- \*Impressive layout, with great furniture
- \*Large stone kitchen, quality appliances
- \*Large bedroom (3/4 wall) with built in
- \*Modern stone bathrooms, luxury finish
- \*Air-con, internal laundry, video intercom
- \*Access to hotel amenities incl. concierge
- \*Impressive roof top pool, spa and gym



**Cherie Xue**  
02 9241 1288



**Kayla Caldwell**  
02 9241 1288