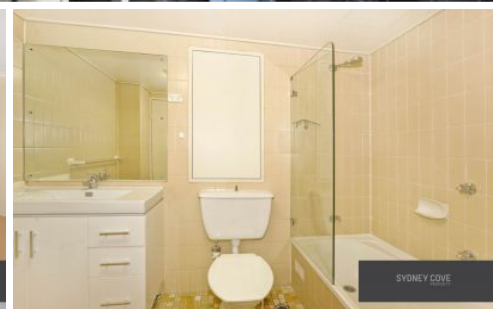
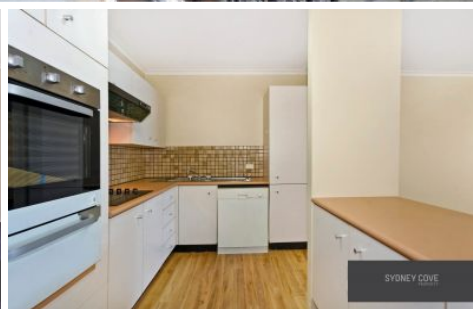


SYDNEY COVE

PROPERTY



25 Market SYDNEY NSW

Fabulous unfurnished one bedroom apartment ideally located on the corner of Clarence and Market Streets, in the heart of the city. Stroll to the Queen Victoria Building, Pitt St Mall, Town Hall Station and Darling Harbour.

Key Points:

- * Spacious open plan living area
- * Queen size bedroom with BIR
- * Private balcony, air conditioning
- * Internal laundry, security building
- * Onsite building manager, lift access
- * Prime central CBD location

1 1

View : <https://www.sydneycoveproperty.com/lease/nsw/sydney-city/sydney/residential/apartment/6216389>



Cherie Xue
02 9241 1288



Kayla Caldwell
02 9241 1288