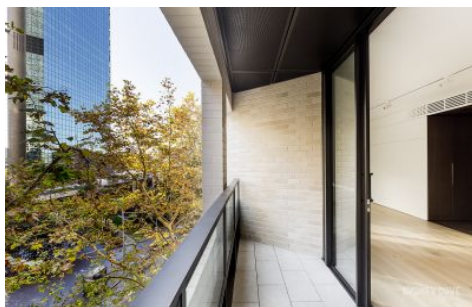





SYDNEY COVE

PROPERTY



18 Loftus Street SYDNEY NSW

2  2  1 

The brand new, Quay Quarter Lanes, reflects the exclusive character of the Circular Quay precinct and is remarkable in design, enhancing the surrounding environment.

This brand new two bedroom apartment is of the highest standard. You will love the open living, spacious bedrooms, private balcony and most of all, the first class finishes throughout the apartment.

Enjoy the convenience with everything at their door including cafes, dining, bars, Opera House, Royal Botanic Gardens and all forms of transport.

Features Include:

- Open plan living with engineered timber flooring
- Spacious master suite with walk in robe & ensuite

View : <https://www.sydneycoveproperty.com/lease/nsw/sydney-city/sydney/residential/apartment/6443145>



Kayla Caldwell
02 9241 1288



Gareth Bootland
02 8259 3333

<https://www.sydneycoveproperty.com>