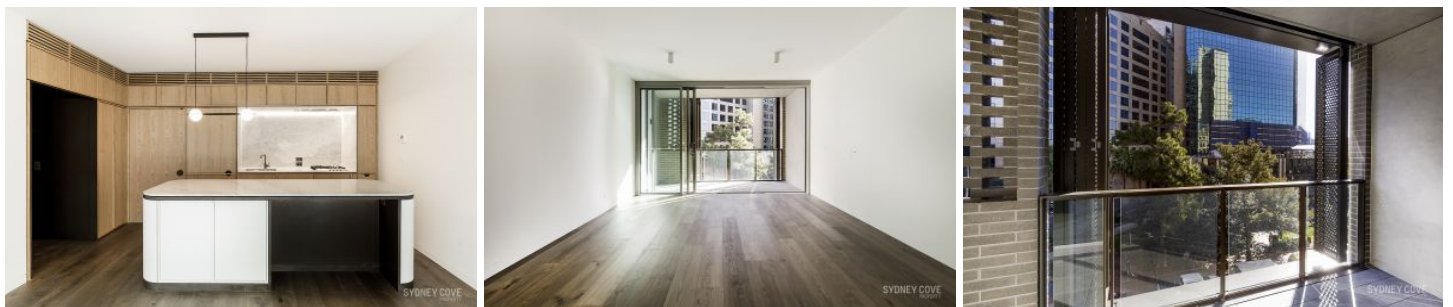
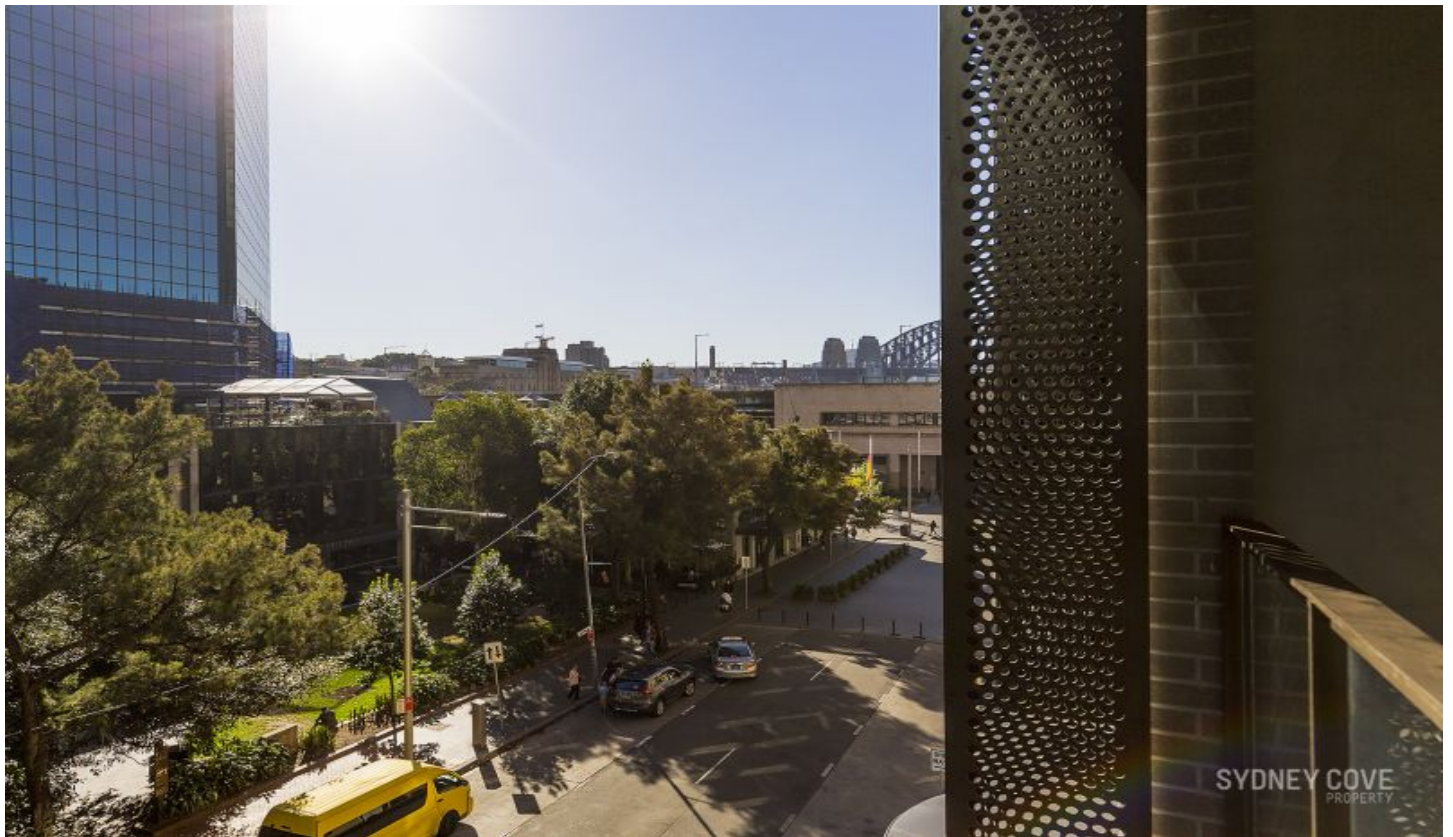


SYDNEY COVE

PROPERTY



8 Loftus Street SYDNEY NSW

2 2

The brand new, Quay Quarter Lanes, reflects the exclusive character of the Circular Quay precinct and is remarkable in design, enhancing the surrounding environment. This brand new two bedroom apartment is of the highest standard. You will love the open plan living, spacious bedrooms, private balcony and most of all, the quality of the finishes throughout the apartment.

Enjoy the convenience with everything at your door including cafes, restaurants, bars, Opera House, Royal Botanic Gardens, light rail, bus, train & ferry.

Features Include:

- Open plan living with engineered timber flooring
- Spacious master suite with walk in robe & ensuite
- Large second bedroom, high quality main bathroom
- Modern kitchen with stone island & gas cooking

View : <https://www.sydneycoveproperty.com/lease/nsw/sydney-city/sydney/residential/apartment/6450726>



Gareth Bootland
02 8259 3333

<https://www.sydneycoveproperty.com>