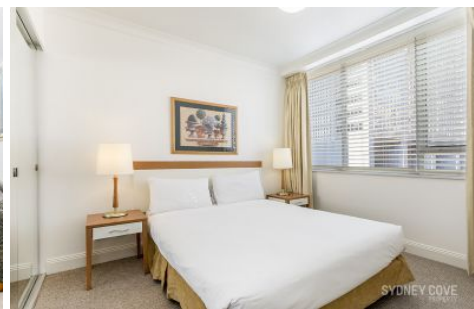


SYDNEY COVE

PROPERTY



38 Bridge Street SYDNEY NSW

1 1

Enjoy the Sydney Harbour lifestyle and convenience from this large apartment located in the perfectly positioned 'Bridgeport'. Positioned in Circular Quay, it enjoys magnificent convenience to Circular Quay station and wharf, Martin Place, Shops, Restaurants and more. The ideal location it is sure to impress!

View : <https://www.sydneycoveproperty.com/lease/nsw/sydney-city/sydney/residential/apartment/6653606>

Key points:

- * Large interior with impressive outlook
- * Stone kitchen with quality appliances
- * Modern bathroom with internal laundry
- * Ducted air-conditioning, built in robe, lift
- * Concierge, recently refurbished, gym



Gareth Bootland
02 8259 3333