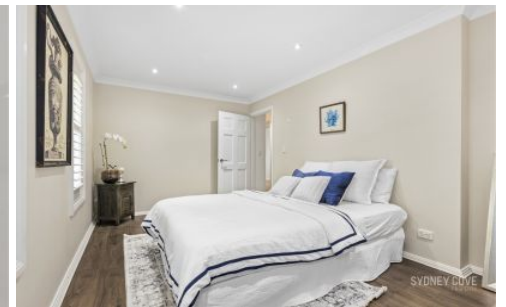


SYDNEY COVE

PROPERTY



7/19 Belmont Avenue WOLLSTONECRAFT NSW

3  1  1 

Showcasing an easy-maintenance courtyard apartment lifestyle, this spacious three-bedroom residence offers a private retreat with a tranquil bushland outlook. It features a light-filled layout, stylish modern appointments and an extra-large outdoor area that all combine to deliver a great home with 170sqm of in/outdoor living space. This unique property also offers so much in terms of convenience as it's peacefully tucked away just a few minutes' walk to Wollstonecraft train station, local cafes, shops, parks, with easy access to Crows Nest and North Sydney. It also features only one common wall and potential to build an extension room subject to council and strata approval.

View : <https://www.sydneycoveproperty.com/sale/nsw/north-shore-lower/wollstonecraft/residential/apartment/6718752>

- A leafy setting overlooking a nature reserve at the rear
- Generous open design featuring stunning timber flooring
- Level access to an alfresco deck and deep rear courtyard
- Three good-sized bedrooms plus a stylish full bathroom

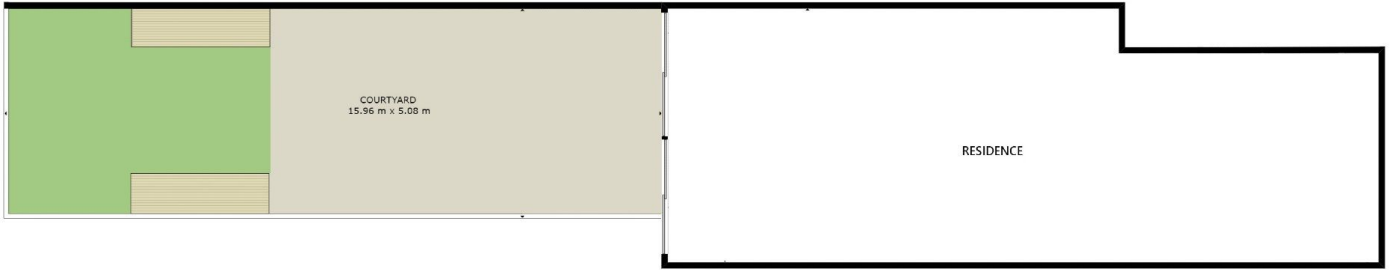


Monique Lavers
82593333

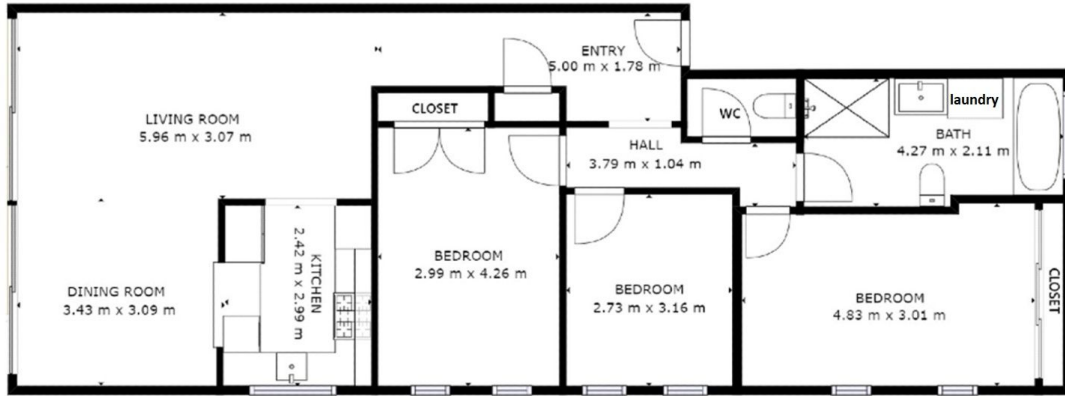


Bryn Fowler
02 8259 3333

<https://www.sydneycoveproperty.com>



Site Plan



Floor 1: 100 m², 2.45 m to ceiling

Total internal area: 100 m²

Measurements are in metres & are approximates. Interested persons should rely on their own enquiries

7/19 Belmont Ave, Wollstonecraft