

SYDNEY COVE

PROPERTY



1 Hosking Place SYDNEY NSW

1 1

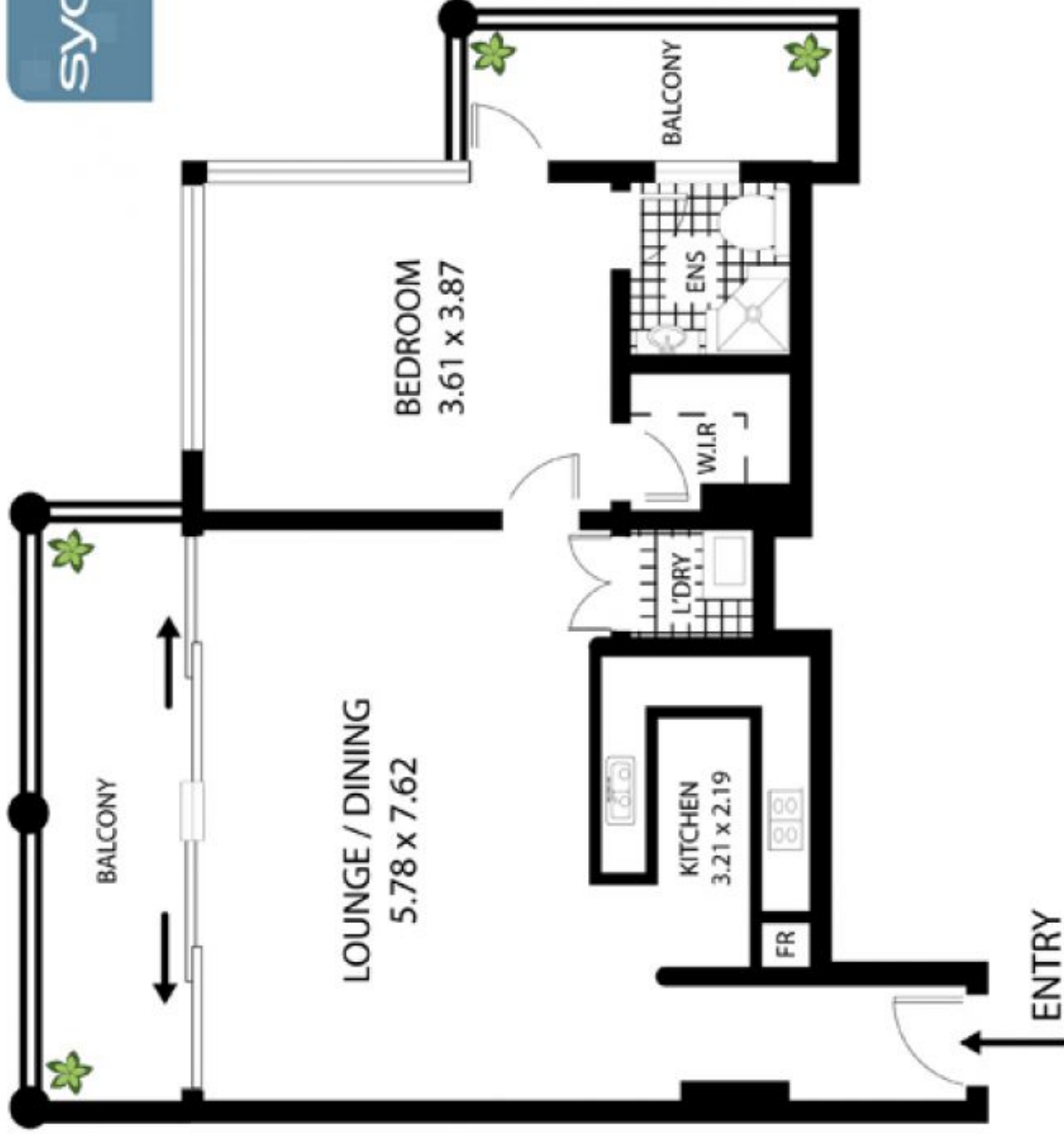
A very rare offering, this immaculately presented apartment in The Aston features the most popular and largest floorplan in the building, positioned high up on level 27. The apartment is well presented with two balconies, city views and would provide an ideal city base a fantastic location just off Martin Place. Nestled between Pitt & Castlereagh Streets, moments to the best of everything Sydney has to offer, The Aston also features an outdoor pool, sundeck, spa, BBQ, gym and on-site Building Manager.

View : <https://www.sydneycoveproperty.com/lease/nsw/sydney-city/sydney/residential/apartment/6878156>

- Spacious and well-proportioned interiors
- Two balconies with South & East city Views
- Positioned high up on level 27 of The Aston
- Living areas and bedroom are double-glazed
- Large gas kitchen with plenty of bench space
- Light & airy interiors and great floorplan
- Bedroom w/walk-in robe, balcony access



Cherie Xue
02 9241 1288



2703/1 Hosking PI Sydney

All measurements are approximate only. Plan is provided as an indication of layout



SCALE