

# SYDNEY COVE

PROPERTY



220 Goulburn St Sydney NSW

1 1 1

Move in and enjoy the convenience and city fringe lifestyle this quality property provides. Only moments to Oxford and Crown Street dining precincts, bars, cafes, and a short walk to the CBD.

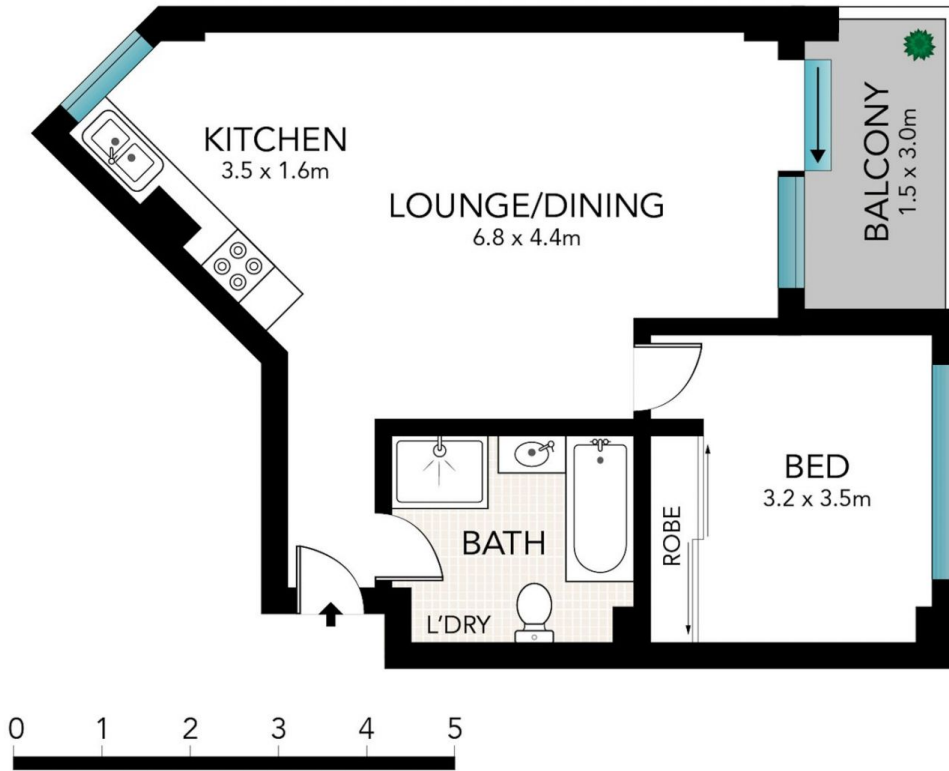
**View** : <https://www.sydneycoveproperty.com/lease/nsw/sydney-city/sydney/residential/apartment/6892253>

#### Key Points:

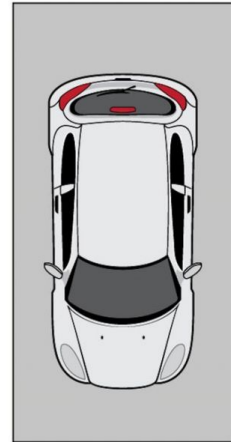
- Well-proportioned living area leading to balcony
- Balcony with South Easterly urban views
- Light and airy bedroom, built-in wardrobe
- Generous sized bathroom with bathtub
- Valuable secure car space for one car
- Communal pool/spa and rooftop terrace
- Secure complex w/ intercom entry & lift



**Cherie Xue**  
02 9241 1288



**SINGLE SECURE  
CAR SPACE**



**(NOT IN POSITION)**



Scale in metres. Indicative only. Dimensions are approximate. All information contained here in is gathered from sources we believe to be reliable. However, we cannot guarantee its accuracy and interested persons should rely on their own enquiries.

**38/220 Goulburn Street, Darlinghurst**

**SYDNEY  
COVE**  
PROPERTY