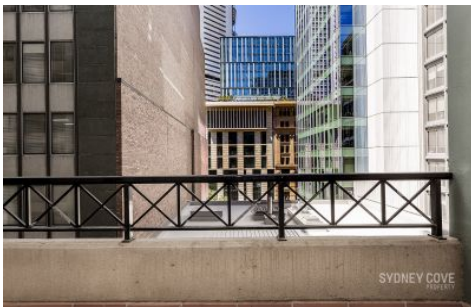


# SYDNEY COVE

PROPERTY



## 1 Hosking PI SYDNEY NSW

Centrally located in the "Aston" apartment building this one bedroom apartment is a very short walk to Martin place which boasts bars, restaurants, cafe's and train station.

Key points:

- \* Large open & spacious floor plan
- \* Stone kitchen and gas appliances
- \* Entertainers balcony off lounge room
- \* Double bedroom with built in robes
- \* Tiled bathroom, Internal Laundry, AC
- \* Onsite concierge, Lift access, Intercom

1  1 

**View :** <https://www.sydneycoveproperty.com/lease/nsw/sydney-city/sydney/residential/apartment/6934760>



**Cherie Xue**  
02 9241 1288