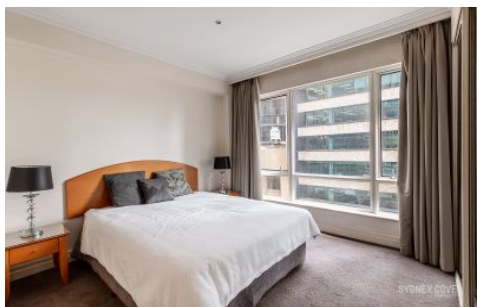


SYDNEY COVE

PROPERTY



2 Bond Street SYDNEY NSW

Positioned in the centre of the atmospheric CBD, this spacious apartment is part of the popular 'Mantra' building on George St. A hive of convenience, this central pad is surrounded by all the excitement of the busy city, with buses, trains, restaurants & bars all within moments of your door.

Key Points

- *Impressive layout, with great furniture
- *Large stone kitchen, quality appliances
- *Large bedroom (3/4 wall) with built in
- *Modern stone bathrooms, luxury finish
- *Air-con, internal laundry, video intercom
- *Access to hotel amenities incl. concierge
- *Impressive roof top pool, spa and gym

1 

View : <https://www.sydneycoveproperty.com/lease/nsw/sydney-city/sydney/residential/apartment/7166983>



Cherie Xue
02 9241 1288



Gareth Bootland
02 8259 3333