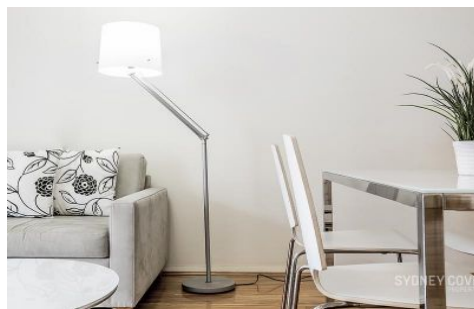


SYDNEY COVE

PROPERTY



25 Market Street SYDNEY NSW

1 1

Enjoying an outlook overlooking Cockle Bay and a central location, this stunning apartment is ideal for those with a busy lifestyle who desire the convenience of city living. Located within the easily accessible building The Berkely, and within minutes to all local bars, restaurants and public transport.

View : <https://www.sydneycoveproperty.com/lease/nsw/sydney-city/sydney/residential/apartment/7169621>

Key Points:

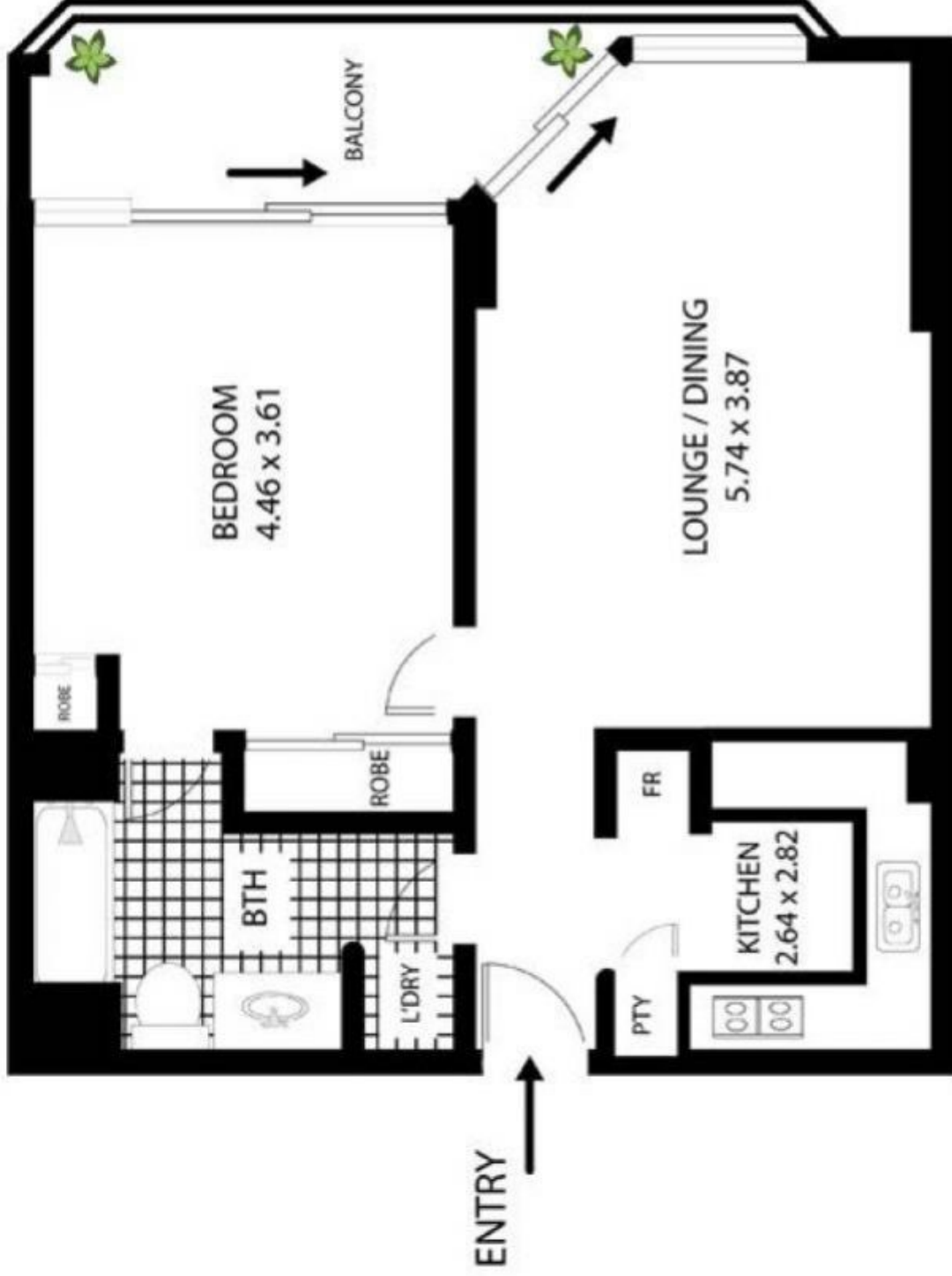
- * Updated kitchen with high quality finishes
- * Good sized bedroom with built in wardrobe
- * Excellent condition and with timber floors
- * Generously sized entertainers balcony
- * Within minutes to local bars and restaurants
- * Immediate access to public transport



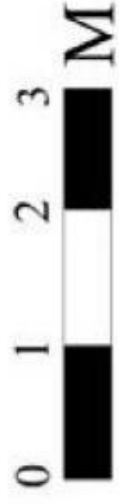
Cherie Xue
02 9241 1288



Gareth Bootland
02 8259 3333



25 Market St Sydney



SCALE

All measurements are approximate only. Plan is provided as an indication of layout