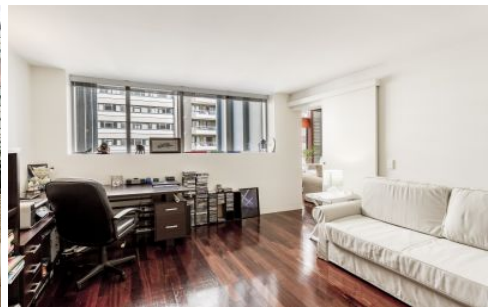


SYDNEY COVE

PROPERTY



2 York St SYDNEY NSW

2 2 1

This beautifully presented two bedroom apartment is set over two levels the impressive 'Portico' building. With dramatic high ceilings, an abundance of light this apartment offers a combination of historical and modern touches whilst being located in a prime CBD position with shops, cafes, transport, The Rocks and Circular Quay all within a close proximity.

Building Size : 109 sqm
View : <https://www.sydneycoveproperty.com/lease/nsw/sydney-city/sydney/residential/apartment/7203951>

Key Points:

- * Two bedrooms spread over both levels
- * Huge 2nd Bedroom with ample built ins
- * Double vaulted ceilings and floor to ceiling glass
- * Sleek kitchen with stainless steel alliances
- * Chic limestone bathroom, internal laundry
- * Ducted Air-con, jarrah polished floorboards
- * Polished floor, intercom entry & secure access



Gareth Bootland
02 8259 3333



Cherie Xue
02 9241 1288