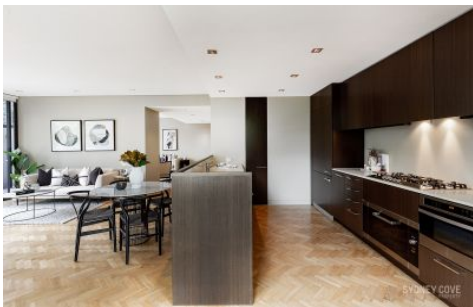


# SYDNEY COVE

PROPERTY



8D/171 Gloucester Street SYDNEY NSW

3 🛏 3 🚿 2 🚗

First time offered for sale since building was completed. Offering an abundance of space and luxury this two storey terrace apartment is located in the CBD's prestige development 'The Stamford Residences'. With 239sqm this residence enjoys the added bonus of a private courtyard. This state of the art home enjoys the finest finishes and is located in the Rocks, moments to all the areas fantastic shops, restaurants and transport.

**View** : <https://www.sydneycoveproperty.com/sale/nsw/sydney-city/sydney/residential/apartment/7234922>

- Extremely spacious interior with superior layout
- Open plan living area with stunning parquetry floors
- Large private courtyard/terrace, ideal for entertaining
- Gourmet kitchen with Miele appliances & gas cooking
- Three double bedrooms with built-in ample wardrobes
- Two luxury marble bathroom, ensuite with bath tub
- Ducted air-conditioning, internal laundry & separate W/C
- Concierge, grand lobby, pool, gym & common BBQ area



**Monique Lavers**  
82593333

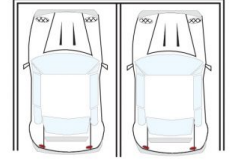


**Bryn Fowler**  
02 8259 3333

ENTRY LEVEL



UPPER LEVEL



2 x SECURE  
CAR SPACES



8D / 171 Gloucester Street, Sydney



All measurements are approximate only.  
Plan is provided as an indication of layout