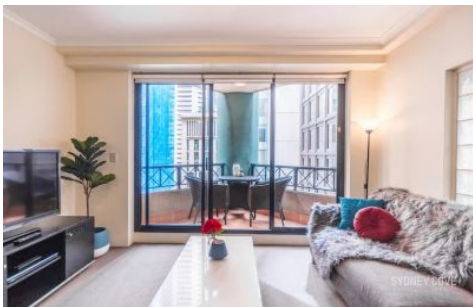


# SYDNEY COVE

PROPERTY



## 1007/1 Hosking PI SYDNEY NSW

1 1

Situated in a perfect central CBD position is this one bedroom apartment complete with a executive furniture package making it a great comfortable home. Positioned on a corner within the The Astor development this apartment has great natural light and is only a short walk to Martin place where you will have bars, restaurants, cafe's and transport.

**View :** <https://www.sydneycoveproperty.com/lease/nsw/sydney-city/sydney/residential/apartment/7411320>

### Key points:

- \* Large open & spacious floor plan
- \* Stone kitchen and gas appliances
- \* Private balcony off loungeroom
- \* Double bedroom with built in robe
- \* Tiled bathroom, Internal Laundry, AC
- \* Onsite concierge, Lift access & pool



**Cherie Xue**  
02 9241 1288



**Gareth Bootland**  
02 8259 3333