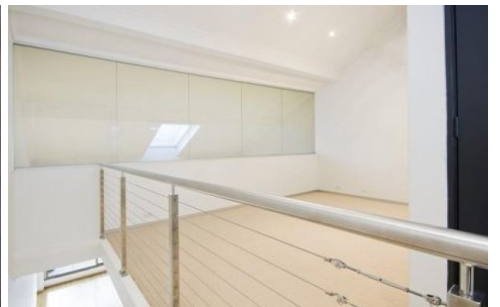
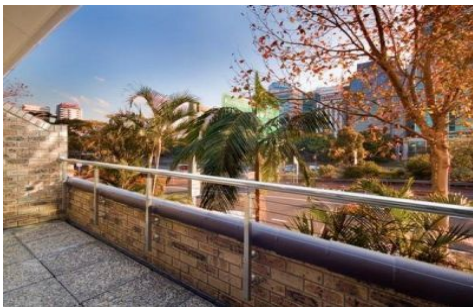


SYDNEY COVE

PROPERTY



1/263-269 Alfred St NORTH SYDNEY NSW

2 2 2

This wide terrace offers a rare opportunity to live and work from home. Total size of 151 sqm, this space offers both a fantastic office & lifestyle located amongst businesses, homes, transport and is only a 10-minute walk to the CBD. This is not to be missed!

View : <https://www.sydneycoveproperty.com/lease/nsw/north-shore-lower/north-sydney/residential/apartment/7450088>

Features include:

- Office on ground level, comprising of reception area, large office/board room
- Good street frontage with great street exposure to street level
- One toilet and laundry located ground floor with front and rear access
- Upper level comprises of private two level apartment with private entry
- Open plan living area with mezzanine height ceilings &



Cherie Xue
02 9241 1288



Gareth Bootland
02 8259 3333