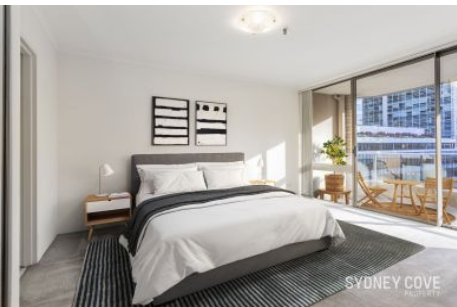


SYDNEY COVE

PROPERTY



42/25 Market Street SYDNEY NSW

1 1 1

One bedroom apartments with parking are highly sought after in The Berkeley, particularly those with north aspects and views to Darling Harbour. With a generous 70 square metre floorplan and scope to further enhance and add value, this apartment will make for a solid long term investment with strong rental returns.

The Berkeley, is positioned in a convenient location in the middle of the city, has a solid full brick construction and has a reputation for being one of the most solid and sound buildings in the CBD. The apartment has plenty of natural sunlight and features a double bedroom with built-in robes, large living area with balcony, modern kitchen complete with quality appliances, internal laundry and secure building access.

Just moments away from Darling Harbour, Queen Victoria building, Townhall Station, the light rail, Pitt Street Mall, shopping, bars & restaurants.

View : <https://www.sydneycoveproperty.com/sale/nsw/sydney-city/sydney/residential/apartment/7505476>



Bryn Fowler
02 8259 3333



Monique Lavers
82593333