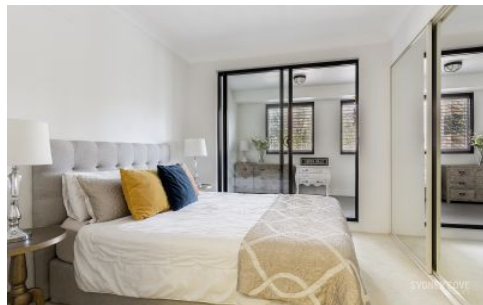
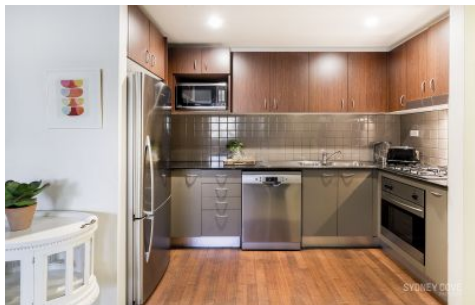


# SYDNEY COVE

PROPERTY



**242 Elizabeth Street SURRY HILLS NSW**

1 1

Centrally located on the fringe of Surry Hills and the CBD, this open style, furnished apartment has been superbly finished. Located moments to Central Station, this corporate apartment offers easy access to all local cafe's, bars and restaurants.

**View :** <https://www.sydneycoveproperty.com/lease/nsw/eastern-suburbs/surry-hills/residential/apartment/7573530>

Key points:

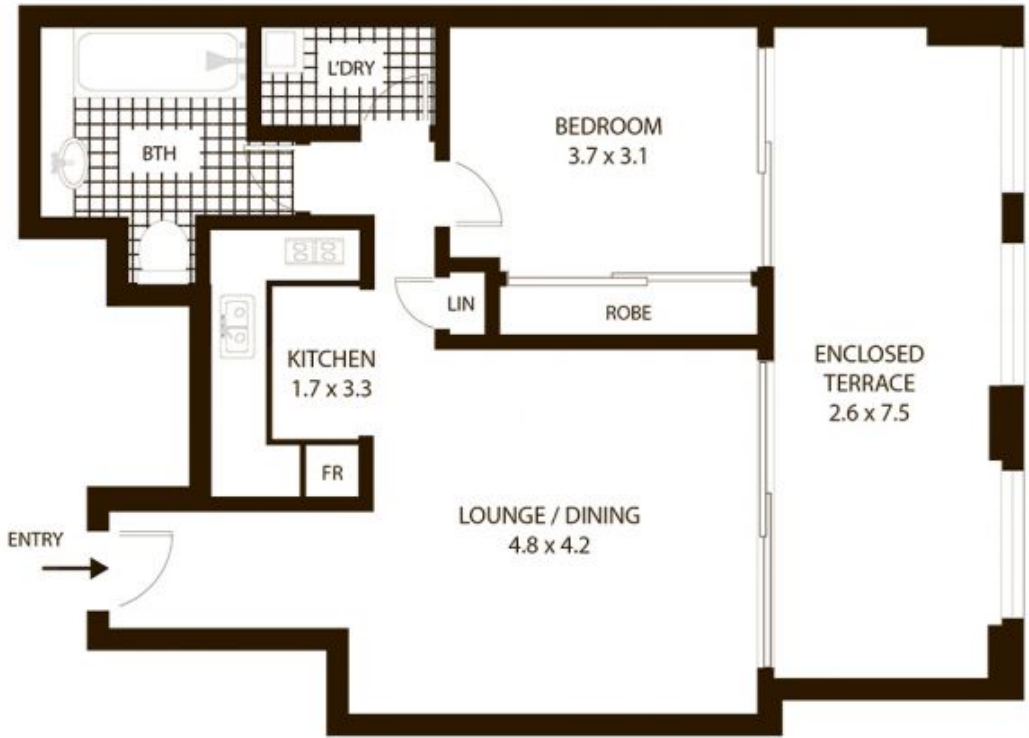
- \* Quality fixtures and fittings throughout
- \* Large kitchen with stone bench tops
- \* Sleek bathroom, floor to ceiling tiles
- \* Large entertainers winter garden
- \* Added louvres on soundproofed windows
- \* Secure building with gym and pool



**Gareth Bootland**  
02 8259 3333



**Cherie Xue**  
02 9241 1288



210/242 Elizabeth St Surry Hills



SCALE

All measurements are approximate only.  
Plan is provided as an indication of layout