

SYDNEY COVE

PROPERTY

Photo of similar apartment



Photo of similar apartment



Photo of similar apartment

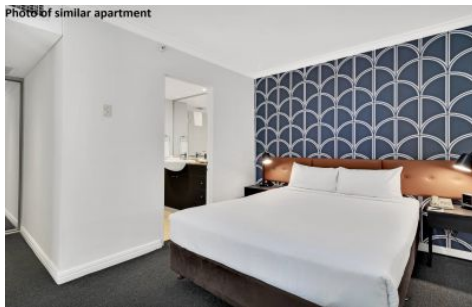


Photo of similar apartment



701/653 George Sydney NSW

1 2

Presenting a fantastic opportunity to own an incredible apartment located in the premier Mantra Sydney Central building run by the world-renowned Accor group, perfect for SMSF or investors looking to get themselves a city bolthole. Positioned for walk-to-everything convenience with World Square shopping complex only a 160m stroll away and easy access to Belmore Park.

Price : \$ 670,000

View : <https://www.sydneycoveproperty.com/sale/nsw/sydney-city/sydney/residential/apartment/7596873>

- Lucrative potential net returns with short term leasing
- Flexibility to short term let or lease through Mantra
- With Mantra option, owner can use for 14 days each year
- Take advantage of rapidly improving accommodation market
- Well appointed, contemporary interiors with two balconies
- Centrally located building, 24hr concierge, on-site restaurant
- Footsteps to the Capital Theatre, easy walk to Town Hall



Brenden Taliana
02 9241 1288



Bryn Fowler
02 8259 3333

<https://www.sydneycoveproperty.com>