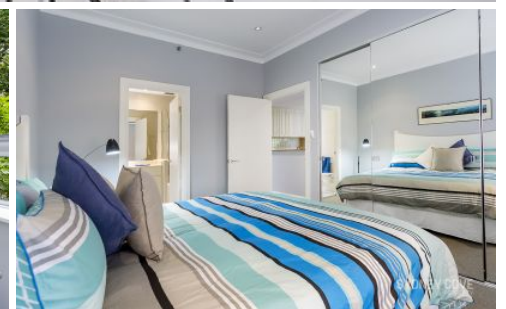


SYDNEY COVE

PROPERTY



38 Bridge SYDNEY NSW

Furnished two bedroom apartment located in 'BRIDGEPORT'. Positioned in a fantastically convenient location it is metres from Circular Quay and moments to Martin Place the CBD, shops and transport.

Key Points:

- * Modern, bright furnishings throughout
- * Double bedroom, large built in wardrobe
- * Open plan living room and dining room
- * Large stone kitchen quality appliances
- * Modern bathroom with internal laundry
- * Ducted A/C, secure lift access & intercom
- * Building features concierge and gym

2 🛏 2 🚿

View : <https://www.sydneycoveproperty.com/lease/nsw/sydney-city/sydney/residential/apartment/7612536>



Cherie Xue
02 9241 1288