

SYDNEY COVE

PROPERTY

Photo of similar apartment



Photo of similar apartment



Photo of similar apartment

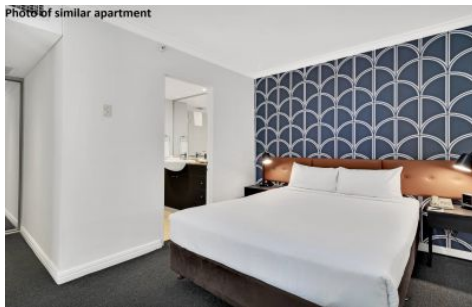


Photo of similar apartment



653 George Street Sydney NSW

1 🏠 2 🚗

Presenting a fantastic opportunity to own an incredible apartment located in the premier Mantra Sydney Central building run by the world-renowned Accor group, perfect for SMSF or investors looking to get themselves a city bolthole. Positioned for walk-to-everything convenience with World Square shopping complex only a 160m stroll away and easy access to Belmore Park.

View : <https://www.sydneycoveproperty.com/sale/nsw/sydney-city/sydney/residential/apartment/7696687>

- Lucrative potential net returns with short term leasing
- Flexibility to short term let or lease through Mantra
- With Mantra option, owner can use for 14 days each year
- Take advantage of rapidly improving accommodation market
- Well appointed, contemporary interiors with two balconies
- Centrally located building, 24hr concierge, on-site restaurant
- Footsteps to the Capital Theatre, easy walk to Town Hall



Brenden Taliana
02 9241 1288



Bryn Fowler
02 8259 3333

<https://www.sydneycoveproperty.com>



Scale in metres. Indicative only. Dimensions are approximate. All information contained here in is gathered from sources we believe to be reliable. However, we cannot guarantee its accuracy and interested persons should rely on their own enquiries.

653 George Street, Haymarket

**SYDNEY
COVE**
PROPERTY