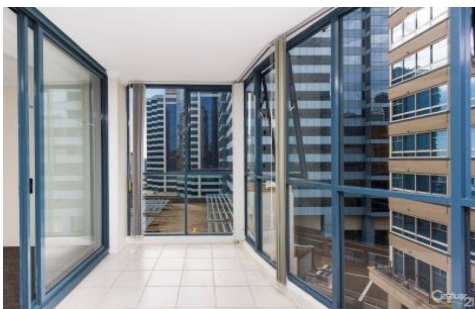


SYDNEY COVE

PROPERTY



42/222 Sussex St Sydney NSW

2 1 1

With an abundance of natural light and a north east aspect, this apartment is ideally positioned within an easy walk to Darling Harbour, Cockle Bay restaurants and bars, QVB, Town Hall this apartment will make for great city home or astute investment.

Key points:

- *Spacious light & airy living areas with amazing views from every room
- *Enclosed balcony/sunroom great for relaxing
- *Two generous double bedrooms with built-ins direct access to balcony
- *Master bedroom with ensuite with separate shower and bath
- *Stainless steel gas kitchen with granite bench tops, dishwasher

Price : \$ 1,260,000
Building Size : 109 sqm
View : <https://www.sydneycoveproperty.com/sale/nsw/sydney-city/sydney/residential/apartment/7747818>



Bryn Fowler
02 8259 3333