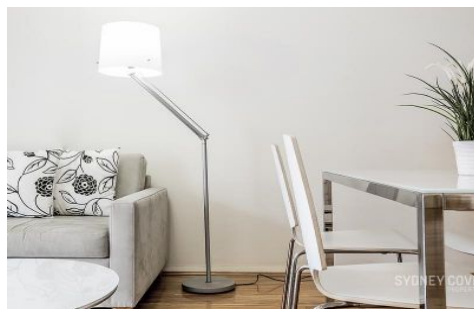


# SYDNEY COVE

PROPERTY



## 25 Market Street SYDNEY NSW

1 1

Enjoying an outlook overlooking Cockle Bay and a central location, this stunning apartment is ideal for those with a busy lifestyle who desire the convenience of city living. Located within the easily accessible building The Berkely, and within minutes to all local bars, restaurants and public transport.

**View :** <https://www.sydneycoveproperty.com/lease/nsw/sydney-city/sydney/residential/apartment/7875835>

### Key Points:

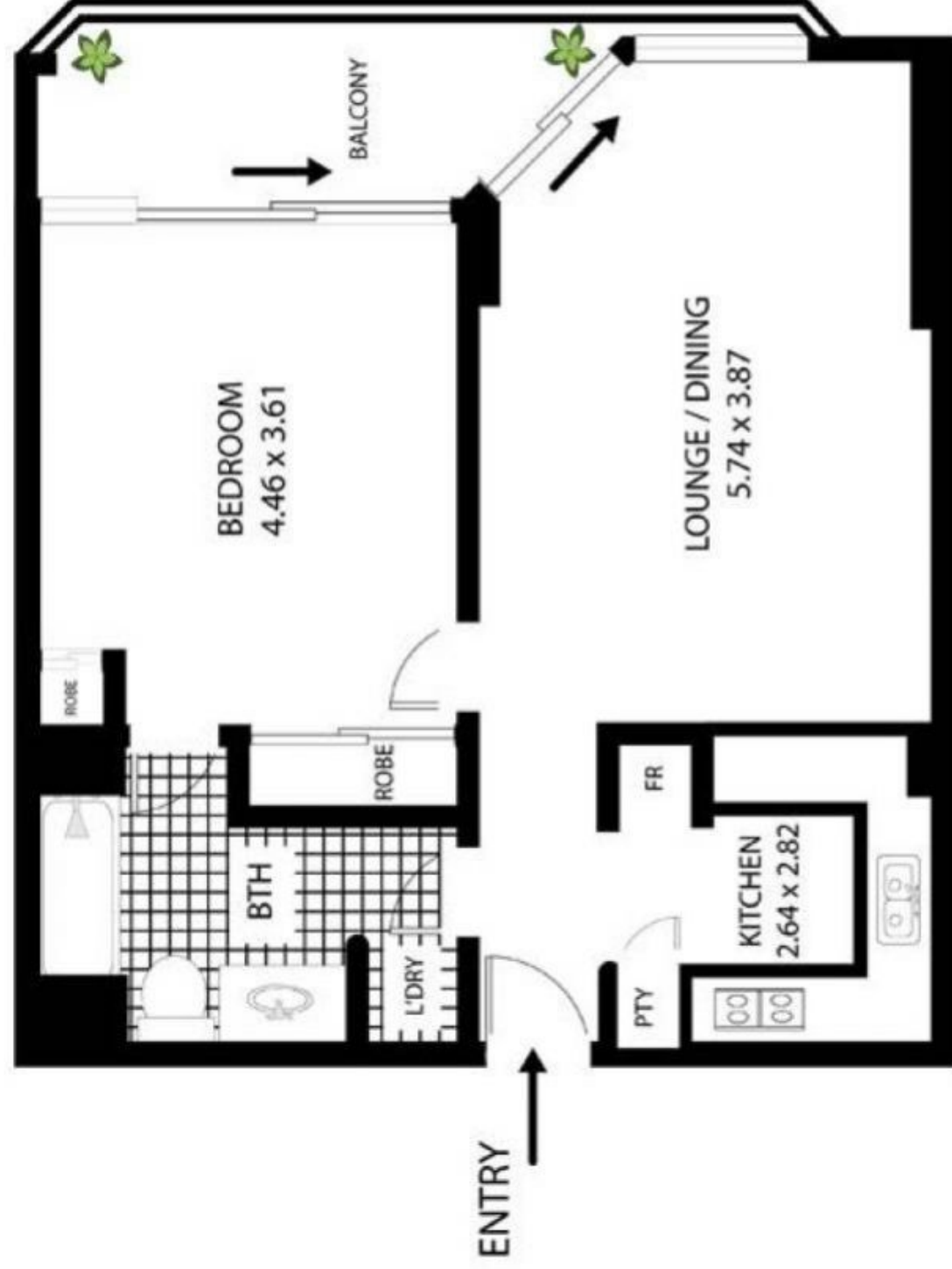
- \* Updated kitchen with high quality finishes
- \* Good sized bedroom with built in wardrobe
- \* Excellent condition and with timber floors
- \* Generously sized entertainers balcony
- \* Within minutes to local bars and restaurants
- \* Immediate access to public transport



**Cherie Xue**  
02 9241 1288



**Gareth Bootland**  
02 8259 3333



# 25 Market St Sydney



All measurements are approximate only. Plan is provided as an indication of layout

SCALE