

SYDNEY COVE

PROPERTY



38/222 Sussex Street Sydney NSW

2 2 1

Enjoy the energy and excitement of a busy CBD lifestyle from the apartment perfectly positioned in the executive building 'Astoria Tower'. This apartment offers a unique city layout, enjoy absolute convenience with its location just moments to Darling Harbour & Town Hall station. This impressive two bedroom home is the perfect choice for those looking for comfortable and stylish living. Boasting an open plan kitchen, lounge, and dining area, this apartment has plenty of space and it's designed to cater for all occasions. The fully equipped kitchen comes complete with all the modern appliances needed to create a delicious meal.

- Well-proportioned open design with lots of natural light
- Spacious living area and formal dining area
- Enclosed sunroom with access to open balcony
- Expansive gourmet kitchen with quality appliances

Price : \$1,280,000

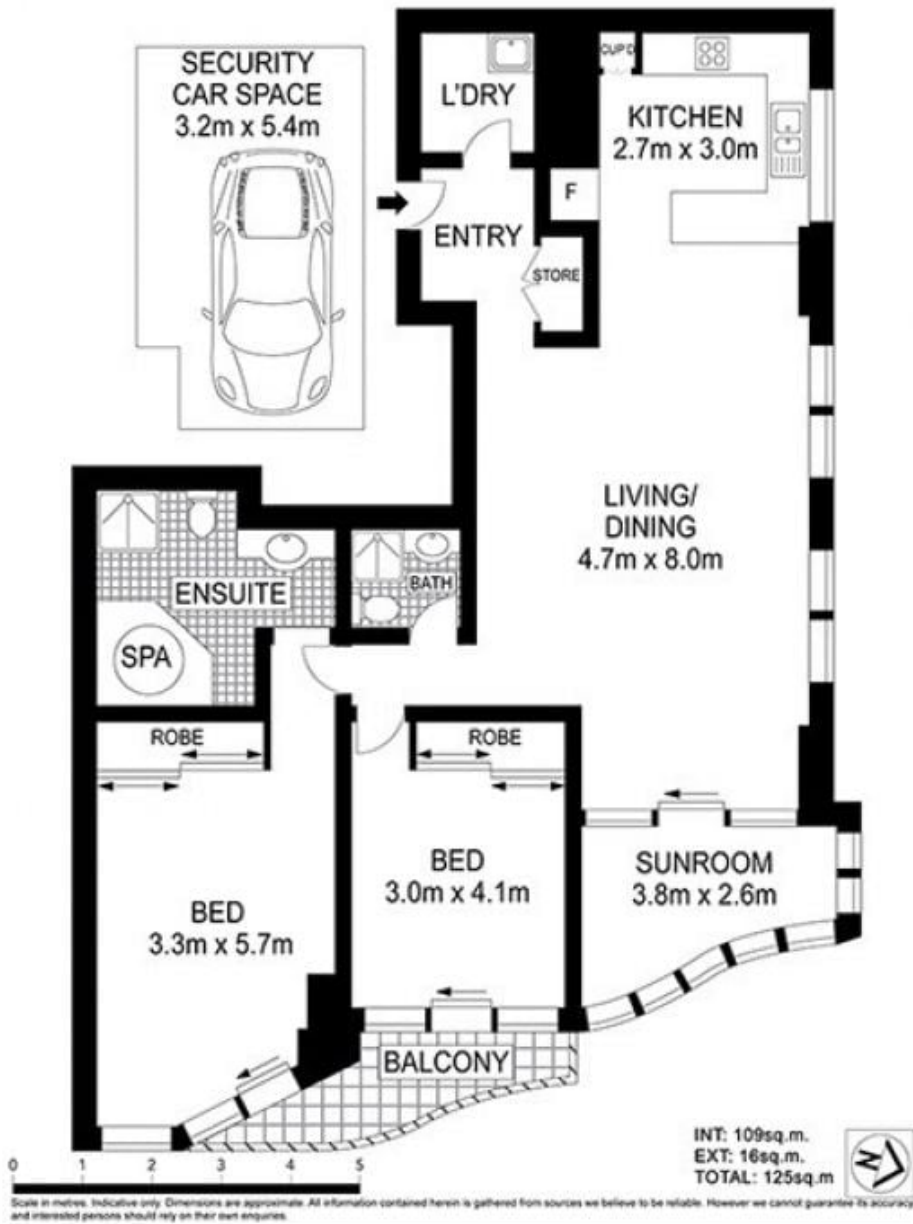
View : <https://www.sydneycoveproperty.com/sale/nsw/sydney-city/sydney/residential/apartment/8003088>



Bryn Fowler
02 8259 3333



Grant Ashby
02 9241 1288



38/222 Sussex Street, Sydney

SYDNEY COVE
PROPERTY