

# SYDNEY COVE

PROPERTY



124/25 Market Street Sydney NSW

1 1 1

Located on a high level of one of the central CBD's most popular buildings 'The Berkeley'. This spacious apartment featuring a one bedroom with parking, north facing and offering stunning views of the City and Darling Harbour. Boasting a generous 70 square meter floor space with potential for further enhancements and increased value, this apartment will make for a solid long term investment with strong rental returns. The Berkeley is positioned in a convenient location in the middle of the city, has a solid full brick construction and has a reputation for being one of the most solid and sound buildings in the CBD. Just moments away from Darling Harbour, Queen Victoria building, Town Hall Station, the light rail, Pitt Street Mall, shopping, bars & restaurants.

**Price** : \$1,150,000

**View** : <https://www.sydneycoveproperty.com/sale/nsw/sydney-city/sydney/residential/apartment/8018542>



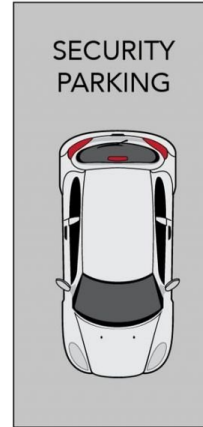
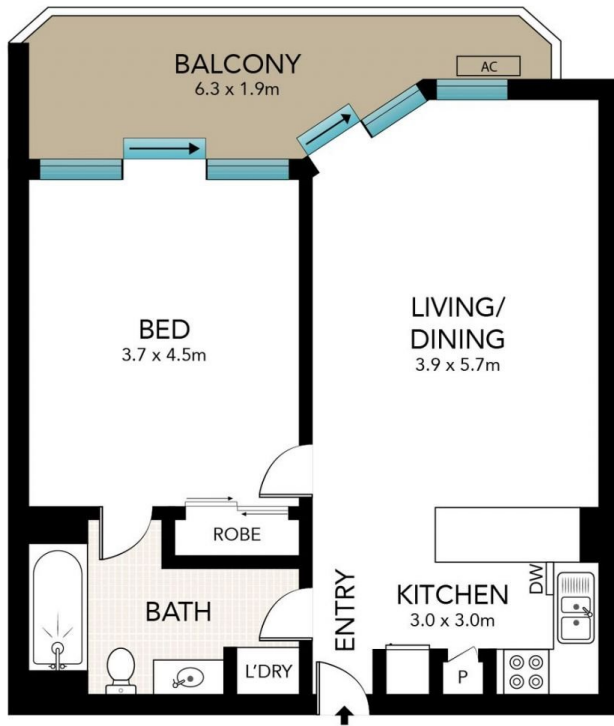
**Bryn Fowler**  
02 8259 3333



**Monique Lavers**  
82593333

- North facing with city & Darling Harbour views, valuable car space

<https://www.sydneycoveproperty.com>



(NOT IN POSITION)



Scale in metres. Indicative only. Dimensions are approximate. All information contained here in is gathered from sources we believe to be reliable. However, we cannot guarantee its accuracy and interested persons should rely on their own enquiries.

124/25 Market Street, Sydney

**SYDNEY  
COVE**  
PROPERTY