

# SYDNEY COVE

PROPERTY



**813/50 Murray Street Sydney NSW**

2  2  1 

Located in the sought after 'One Darling Harbour' building, this incredible two bedroom harbourside apartment features spectacular views of Darling Harbour and the city skyline. Set on the edge of vibrant Darling Harbour district, you will enjoy a walk-to-everywhere location with shopping, dining, transport and entertainment opportunities all at your doorstep. You will also enjoy the revitalisation of Harbourside with Mirvac's new development set to reinvigorate Darling Harbour and the new Pyrmont train station only minutes away.

- Fantastic eastern views overlooking the harbour and city skyline
- Two large bedrooms with built-in robes and balcony access
- Modern bathrooms with stone finishes and bathtub in main

**Price** : \$1,950,000

**View** : <https://www.sydneycoveproperty.com/sale/nsw/sydney-city/sydney/residential/apartment/8073098>



**Brenden Taliana**  
02 9241 1288

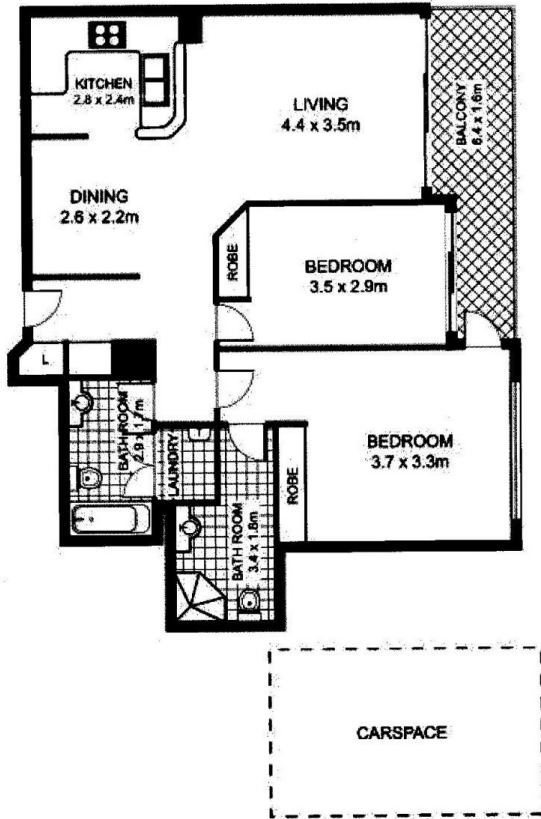


**Bryn Fowler**  
02 8259 3333

<https://www.sydneycoveproperty.com>

SCALE 1m

\* note  
all measurements are approximate only.  
Plan is provided only as an indication of layout.



Scale in metres. Indicative only. Dimensions are approximate. All information contained here in is gathered from sources we believe to be reliable. However, we cannot guarantee its accuracy and interested persons should rely on their own enquiries.

813/50 Murray Street, Sydney

SYDNEY COVE  
PROPERTY