

SYDNEY COVE

PROPERTY



1603/30 Glen Street Milsons Point NSW

2 2 1

Situated in the serene harbourside area of Milsons Point, this elegantly designed north facing two bedroom apartment seamlessly combines contemporary living with stunning views. Featuring an open plan living and dining area that extends to a sunlit balcony, you will be captivated by the intimate harbour views overlooking Lavender Bay. Conveniently located just a short walk from local shops, cafés, parks, and public transport, it offers easy access to both North Sydney and the CBD.

- Large open & spacious floor plan with beautifully presented interiors
- Seamless flow to a large balcony with views over Lavender Bay
- Sleek and modern Caesarstone kitchen with top-quality

Type : Apartment

Price : \$ 1,725,000

View : <https://www.sydneycoveproperty.com/sale/nsw/north-shore-lower/milsons-point/residential/apartment/8127857>



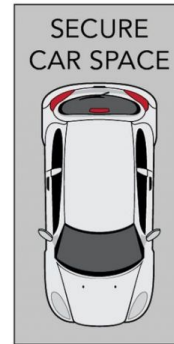
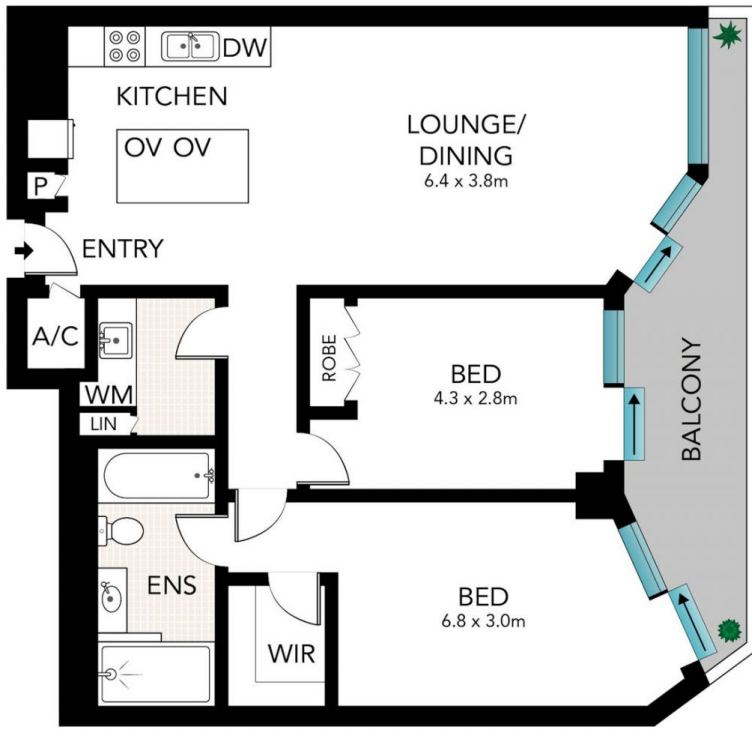
Bryn Fowler
02 8259 3333



Grant Ashby
02 9241 1288

[For full version visit the website](https://www.sydneycoveproperty.com)

<https://www.sydneycoveproperty.com>



(NOT IN POSITION)



Scale in metres. Indicative only. Dimensions are approximate. All information contained here in is gathered from sources we believe to be reliable. However, we cannot guarantee its accuracy and interested persons should rely on their own enquiries.

1603/30 Glen Street, Milsons Point

**SYDNEY
COVE**
PROPERTY