

SYDNEY COVE

PROPERTY



2106/161 Clarence Street Sydney NSW

2 **2**

Discover unparalleled luxury in this stunning 2-bedroom apartment with study, located in the heart of Sydney. Situated in the prestigious ARC building, designed by Koichi Takada and Crown Group, this residence offers city views with an open-plan dining area and a gourmet kitchen featuring premium appliances. Enjoy access to top-tier amenities, including an indoor swimming pool, gym. Positioned just steps from Sydney's finest restaurants, shopping, and entertainment, this apartment is perfect for professionals seeking the ultimate city lifestyle.

- Fully furnished, currently leased for \$1,500 per week, open-plan living and dining areas
- Featuring floor-to-ceiling windows with city views, immaculate condition throughout

Type : Apartment
Price : Contact Agent
View : <https://www.sydneycoveproperty.com/sale/nsw/sydney-city/sydney/residential/apartment/8172655>



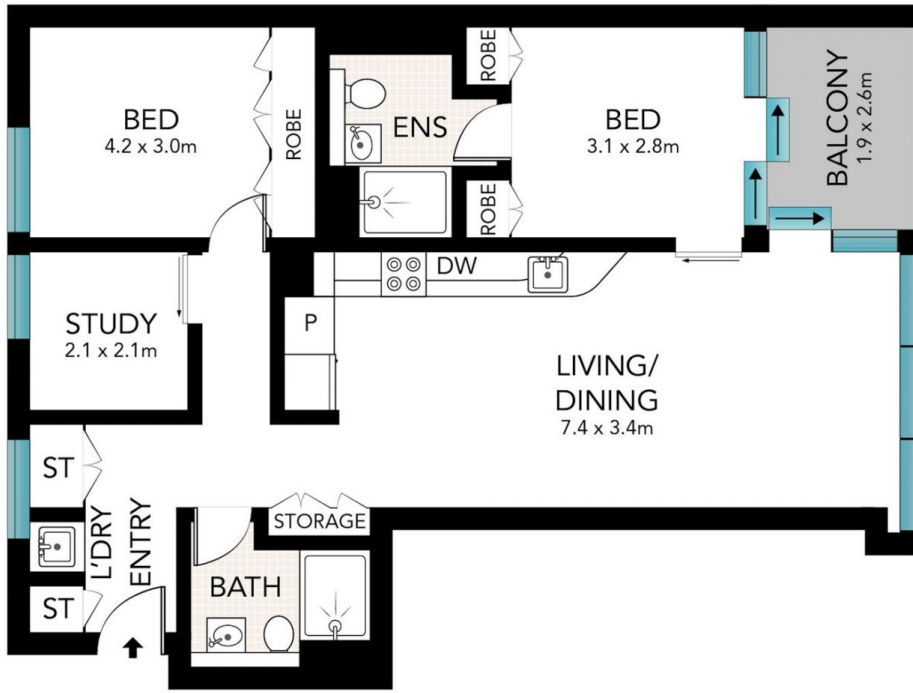
Bryn Fowler
02 8259 3333



Monique Lavers
82593333

[For full version visit the website](https://www.sydneycoveproperty.com)

<https://www.sydneycoveproperty.com>



Scale in metres. Indicative only. Dimensions are approximate. All information contained here in is gathered from sources we believe to be reliable. However, we cannot guarantee its accuracy and interested persons should rely on their own enquiries.

2106/161 Clarence Street, Sydney

**SYDNEY
COVE**
PROPERTY